



# morton.

**Wentworth Point** B3.01/14 Half Street

 3  2  2

Located in the vibrant Waterfront Estate, Yukon development by Sekisui is sophisticated urban living at its best. Yukon is a waterfront building surrounding a beautifully landscaped garden with in-ground pool incorporating an alfresco dining Area providing a great setting for entertaining family and friends this summer.

- Timber flooring throughout
- Open plan living and dining room
- Covered balcony with direct views of the bay
- Zoned ducted air conditioning throughout
- Polished stone bench tops with mirror splashback
- Modern slick kitchen appliances
- Generous size bedrooms with built-in wardrobes
- Ultra-modern bathroom and en-suite in main bedroom
- Private laundry with clothes dryer and internal storage space
- Set in a security building with audio and visual intercom
- Double secure car space and storage cage

### View

As advertised or by appointment

### Agent

**Nevena Petrovic**

 0428 835 910

 [nevena@morton.com.au](mailto:nevena@morton.com.au)

[morton.com.au](http://morton.com.au)

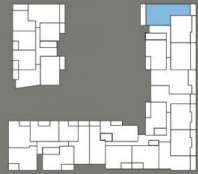
the  
**ADDRESS**  
WENTWORTH POINT

YUKON

**APARTMENT B3.01**

3 Bed / 2 Bath

Internal Area 110 sqm  
External Area 10 sqm  
Total Area 120 sqm



Level 3

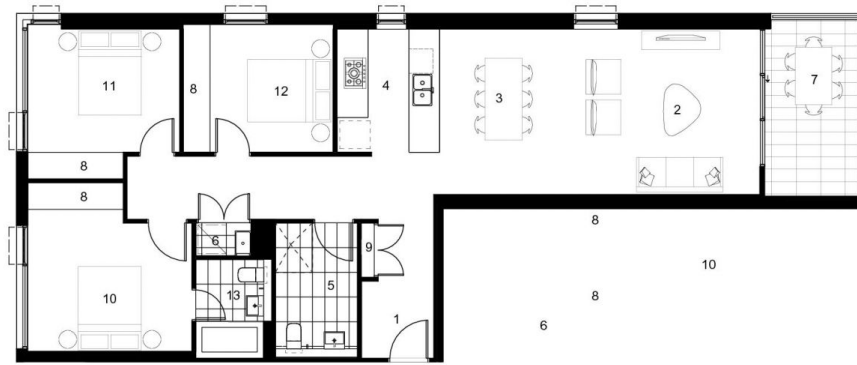


**KEY**

- |             |              |
|-------------|--------------|
| 01 Entry    | 08 Robe      |
| 02 Living   | 09 Store     |
| 03 Dining   | 10 Bedroom 1 |
| 04 Kitchen  | 11 Bedroom 2 |
| 05 Bathroom | 12 Bedroom 3 |
| 06 Laundry  | 13 Ensuite   |
| 07 Balcony  |              |

1800 333 818

TheAddressApartments.com.au



Revision E 29.08.2014

Disclaimer: The particulars are set out as a general outline for the guidance of intending purchasers and do not constitute an offer or contract. All descriptions, dimensions, references to conditions and necessary permissions for use and other details are given in good faith and are believed to be correct, but any intending purchasers should not rely on them as statements or representations of fact, but must satisfy themselves by inspection or otherwise to the correctness of each item, and where necessary seek advice. No third party supplier or their agents has any authority to make or give any representations or warranty in relation to this property. \*External areas may be larger for courtyard apartments. Refer to the detailed area schedule.