



**morton.**

**Kirrawee** 108/11 Village Place

 2  1  1

**View**

As advertised or by appointment

**Agent**

**Lisa Xi**

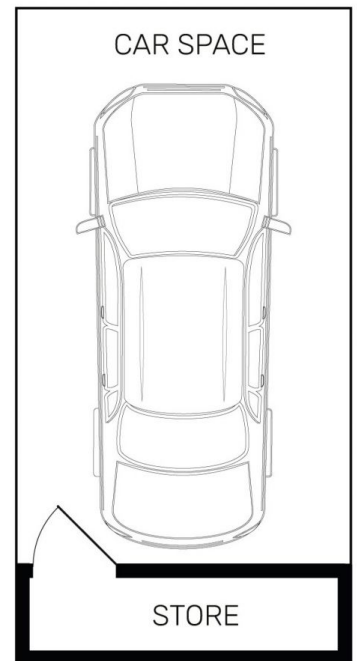
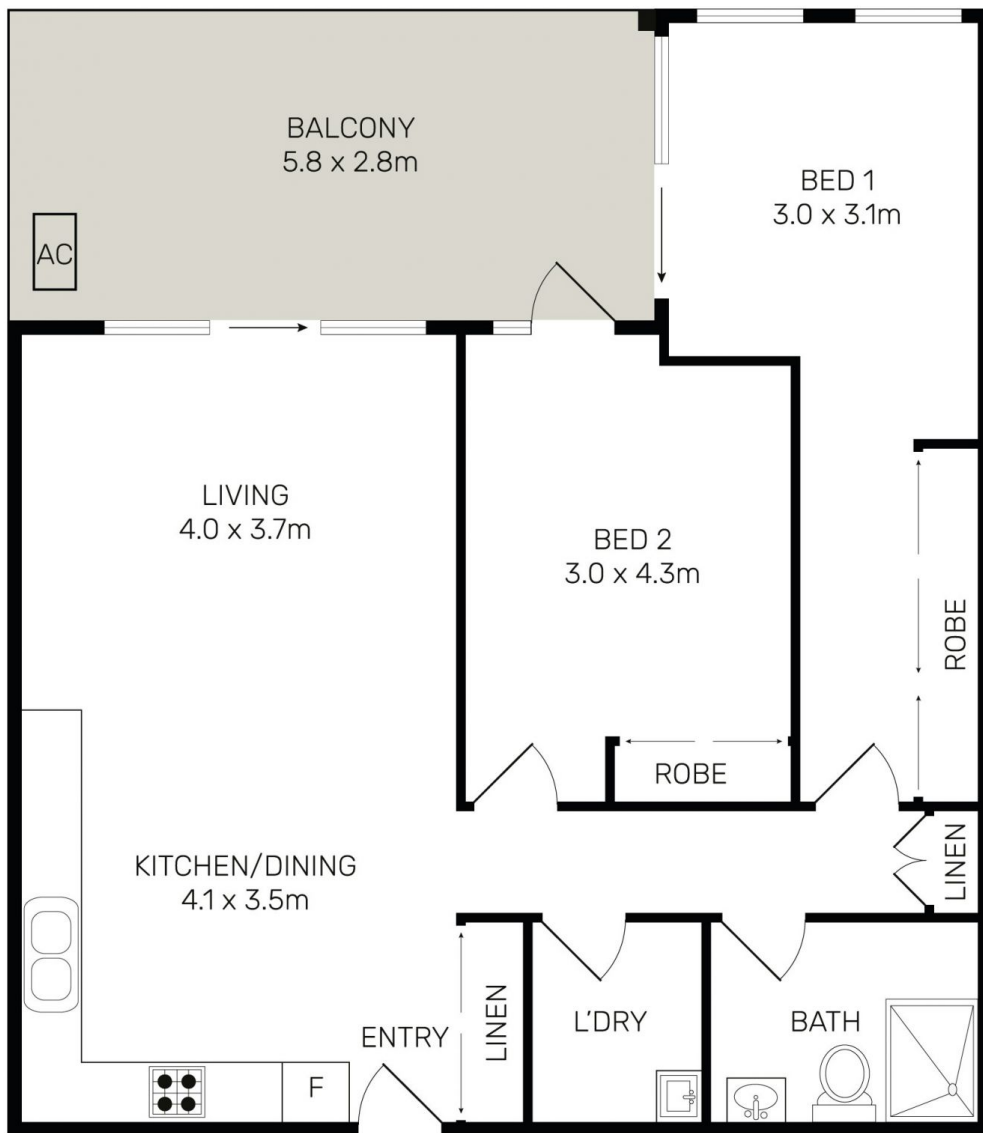
 0401 311 667

 [lisa@morton.com.au](mailto:lisa@morton.com.au)

Brightly presented with stylish finishes throughout, it sits in a quiet and private position in the acclaimed 'South Village' development right in the heart of the Shire, and walking distance to all everyday conveniences.

- Bright and airy open design with reverse air-conditioning
- Good-sized balcony that flows easily off the living space
- Sleek modern kitchen with top-of-the-range appliances
- Good sized designer bathroom and separate internal laundry
- Security basement car space, caged storage and intercom
- Aldi, Coles and childcare literally at the front door

[morton.com.au](http://morton.com.au)



All information contained herein is gathered from all sources we believe to be reliable. However we cannot guarantee its accuracy and interested parties should rely on their own enquiries.



CampaignPROS

morton.

Kirrawee 108/11 Village Street