



morton.

Penrith 3.02/1 Markham Avenue

 1  1  1

With a total area of 115m², this one bedroom apartments offers not only space yet also sophisticated finishes and stunning colour palettes creating an environment of pure comfort and desirable living.

- ? Large East facing balcony allowing you to enjoy the morning sun
- ? Contemporary kitchen complete with high end Westinghouse appliances
- ? Premium finishes and inclusions include screen doors and vertical blinds
- ? Secured parking, storage cages and lift access
- ? Pet friendly body corporate
- ? Beautifully landscaped communal rooftop terrace with commanding views

Conveniently located with just a short walk to Nepean Hospital and only 1.8km to Penrith Train Station and 1.2km to Kingswood Train Station

View

As advertised or by appointment

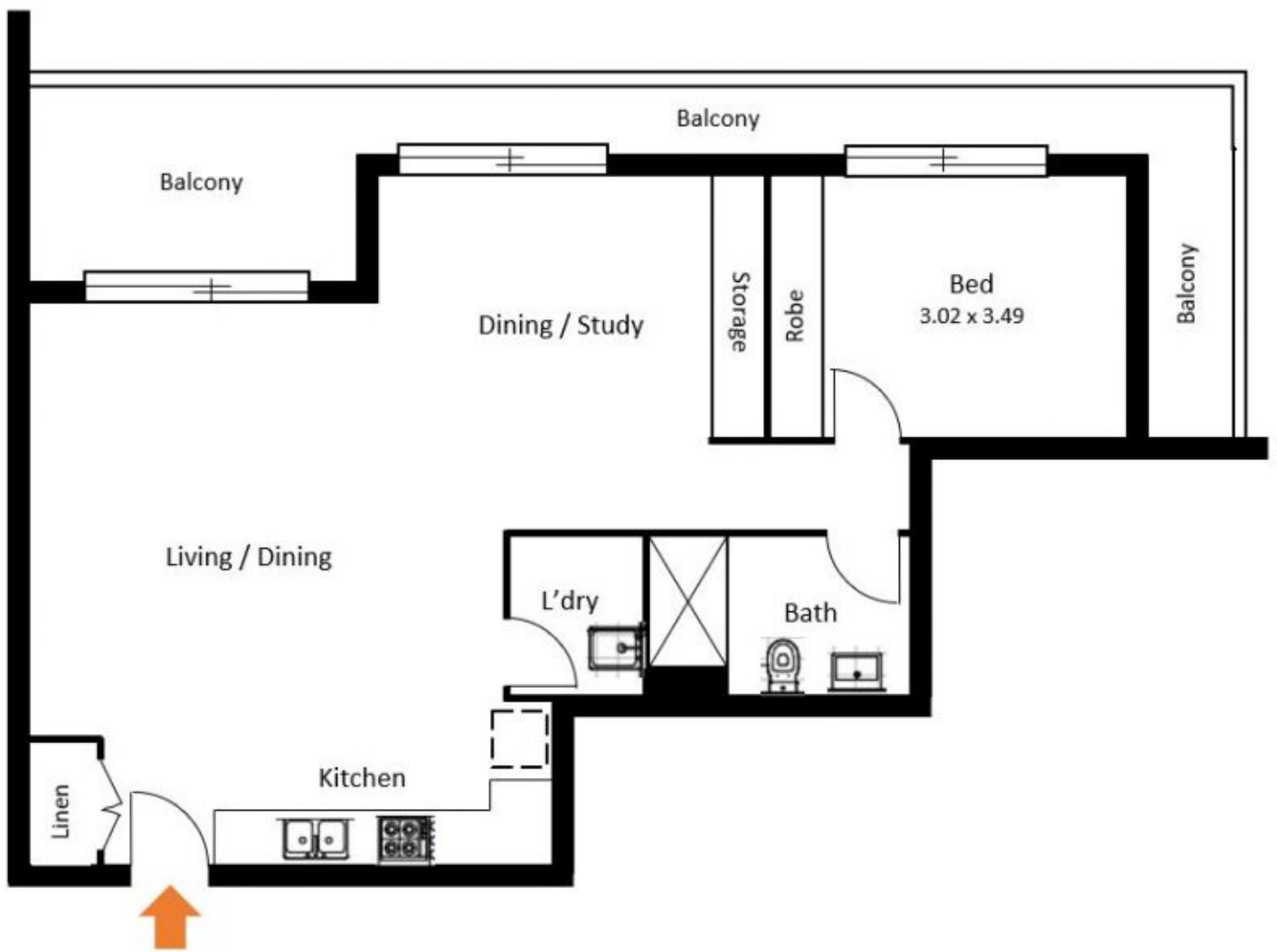
Agent

Ian Ahearn

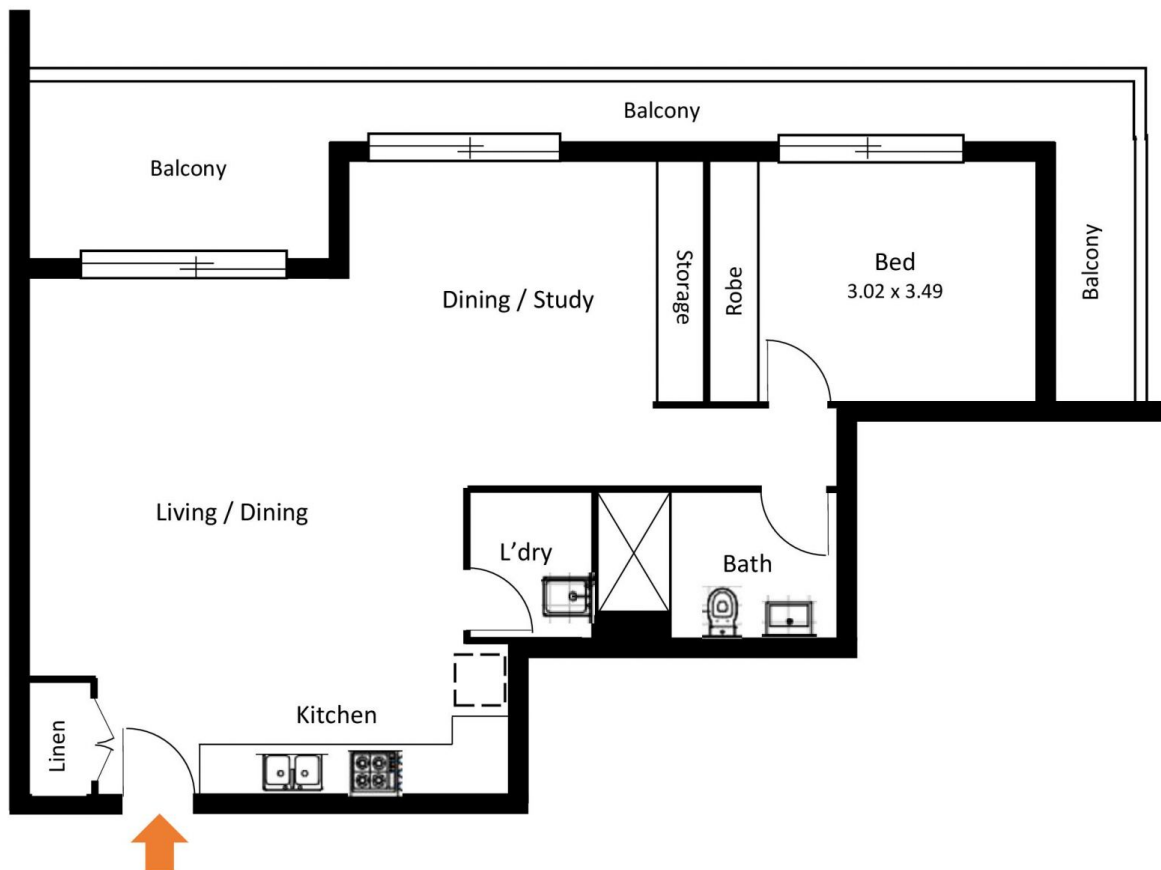
 0457 483 610

 ian.ahearn@morton.com.au

morton.com.au



BEDS	1
BATHS	1
LEVEL	3
CAR SPACE	1
STORAGE CAGE	1
INTERNAL m2	93
EXTERNAL m2	15
TOTAL m2	108
ASPECT	East



Centrum
Markham

302/1 MARKHAM AVENUE, PENRITH

NOT TO SCALE, ALL MEASUREMENTS ARE APPROXIMATE METRES, DRAWN FOR PRESENTATION PURPOSES ONLY
Disclaimer: While care has been taken in the preparation of these particulars, no responsibility is accepted for the accuracy of the whole or any part and interested persons are advised to make their own enquiries and satisfy themselves in all respects