



# morton.

**Westmead** 53/17B Booth Street

 3  2  2

Great opportunity to lease a three bedroom apartment in the new Asha development in Westmead. This development is perfectly positioned just minutes away from Parramatta CBD with easy access to transport, schools, Westfield shopping centre and Parramatta Park.

- Generous open plan design with fresh modern décor
- Fresh & beautiful designer kitchen
- Timber flooring throughout living area plus ample storage
- Both bathrooms have floor to ceiling tiles & mirrored vanity cabinet
- Spacious bedroom with built-in robe, abundance of natural light
- Open oversized balcony with district views
- Intercom, laundry with dryer, air-conditioning
- Level four apartment
- Secure car park and storage cage in basement

### View

As advertised or by appointment

### Agent

**Nevena Petrovic**

 0428 835 910

 [nevena@morton.com.au](mailto:nevena@morton.com.au)

[morton.com.au](http://morton.com.au)



# APARTMENT

# 53

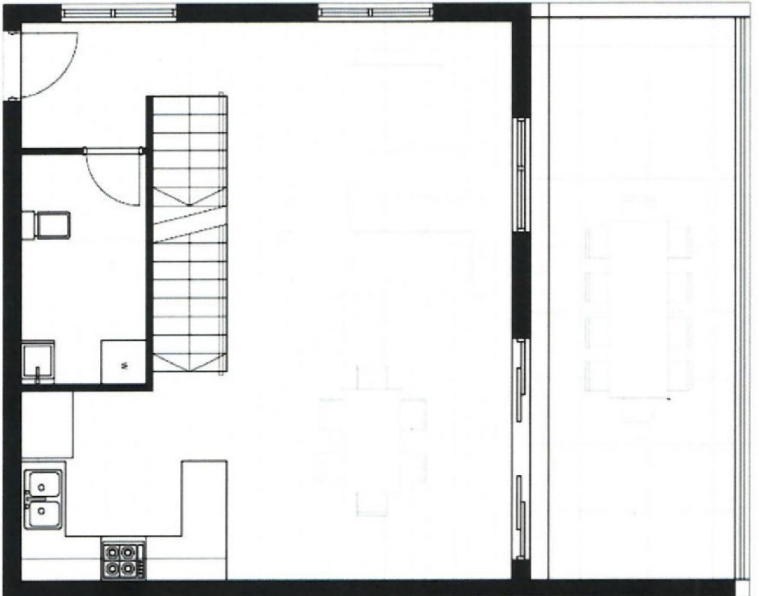
BEDROOMS	03
BATHROOMS	03
INTERNAL	111m <sup>2</sup>
EXTERNAL	21m <sup>2</sup>
TOTAL AREA	132m <sup>2</sup>



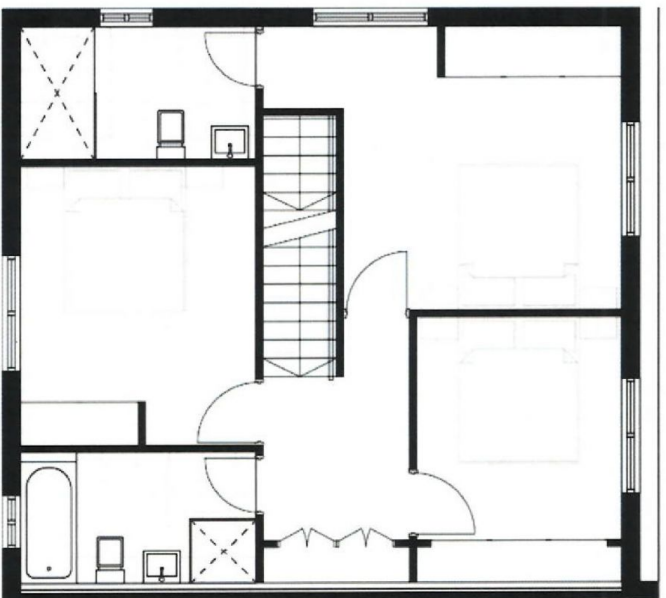
LEVEL 04



LEVEL 05



LOWER



UPPER

Disclaimer: The provided information is set out as a general guide to effect the developer's current intentions. All information is believed to be correct at the time of campaign development and is subject to CIP. All planning permissions should seek the correct legal advice. Some items are not included.