



morton.

Ermington 427/48-56 Bundarra Street

🛏 2 🚿 2 🚗 1

Located in the riverside urban hub of Royal Shores, this apartment located in the Safari building offers waterside community lifestyle within the master-planned development in family friendly Ermington. Perched on the waters edge, Royal Shores offers easy access to the river, riverside walkways and cycleways, and recreational parks designed to entertain all ages.

- Open plan living and dining flowing to entertainer's alfresco balcony with sunny river views
- Double galley kitchen with stainless steel appliances, stone bench tops
- Timber look tile flooring throughout living area
- Reverse cycle air conditioning
- Data/TV points in living and main bedroom
- Security access building with audio-video intercom
- Secure car space & storage cage

View

As advertised or by appointment

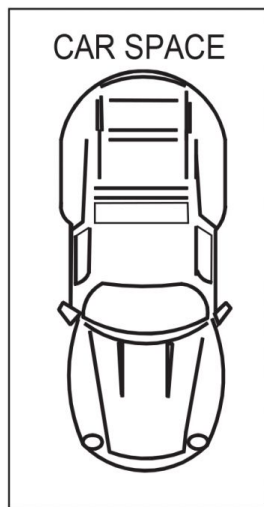
Agent

Nevena Petrovic

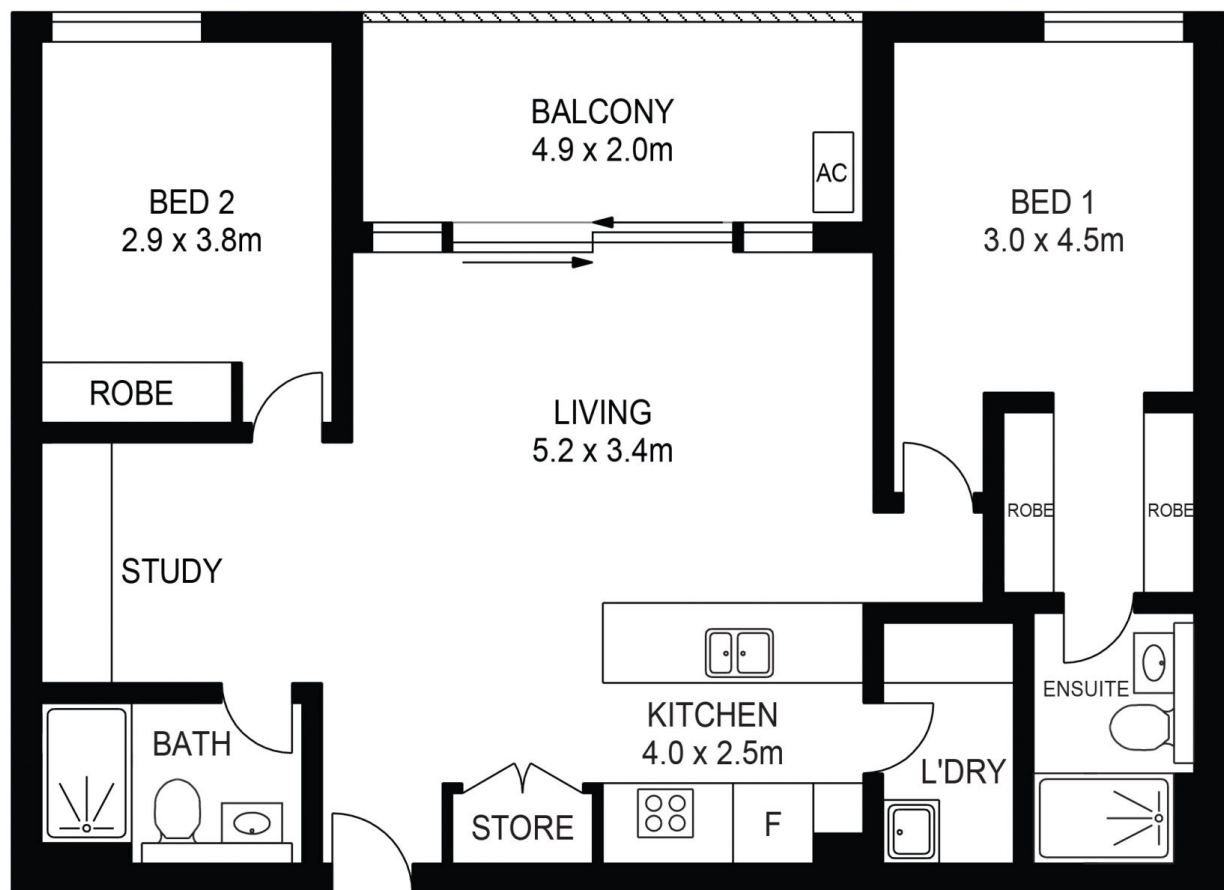
📞 0428 835 910

✉ nevena@morton.com.au

morton.com.au



STORAGE
1.5 x 1.5m



APPROX. INT. AREA : 82m²

APPROX. EXT AREA : 25m²

427/48-56 BUNDARRA STREET, ERMINGTON



ASSET
PHOTOGRAPHERS

www.assetphotographers.com.au

Please note these measurements are approximate only.
The plans are intended as a rough guide for illustrative
purposes. It is not warranted or guaranteed to be correct
nor is it a part of the sale or rental contract.

