



# morton.

**Pyrmont** 107/8-14 Wharf Crescent

 3  2  2

Experience the ultimate in luxury harbourfront elegance and enjoy a superb combination of flowing interiors, high quality finishes and a coveted north easterly position. Dominated by iconic views across Sydney harbour to the soaring city skyline and Harbour Bridge this impressive lifestyle residence is the perfect sanctuary for those who seek luxury, privacy and convenience.

- Positioned literally on the harbour provides a truly unique lifestyle
- Desirable north East aspect with all day natural light
- Inspiring views across the water with spectacular city backdrop
- Flowing open plan living space features timber flooring
- Sleek stone kitchen, gas appliances, soft-touch cabinetry
- Generous master with skyline views, ensuite and built-ins
- Double lock up garage and adjacent storage area
- Automated and sliding exterior privacy screens
- Boutique building of only 27 luxury apartments

### View

As advertised or by appointment

### Agent

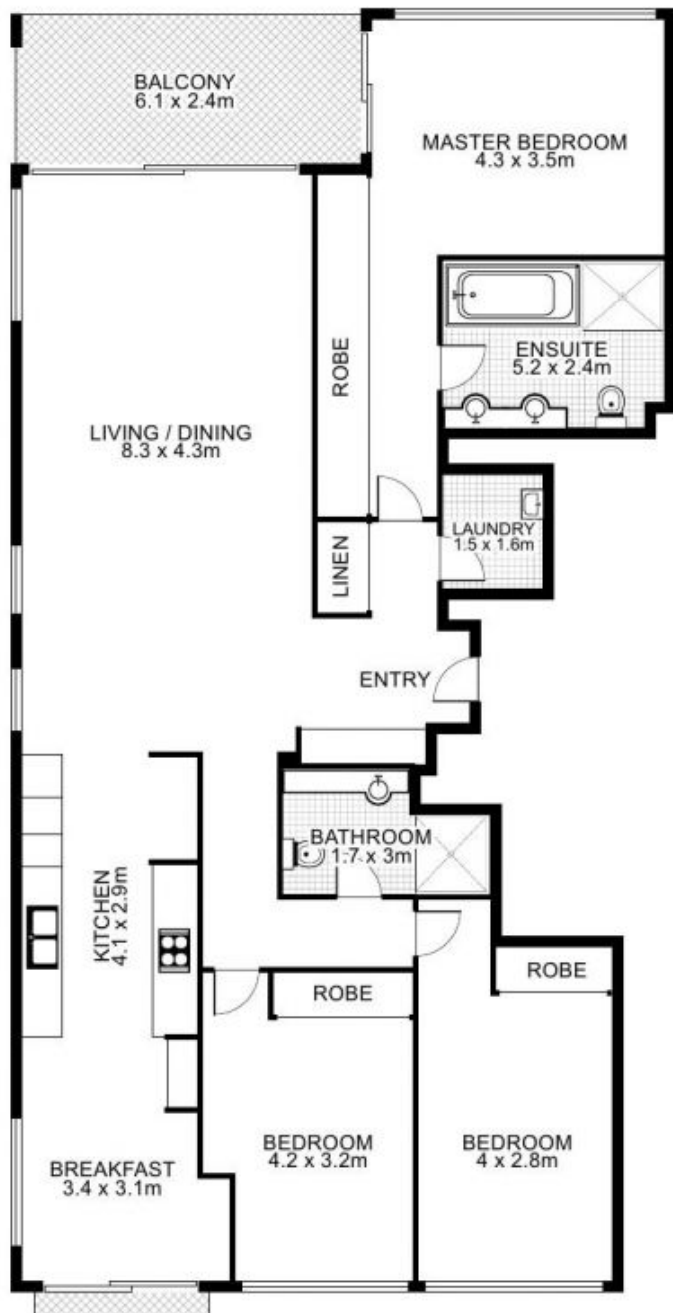
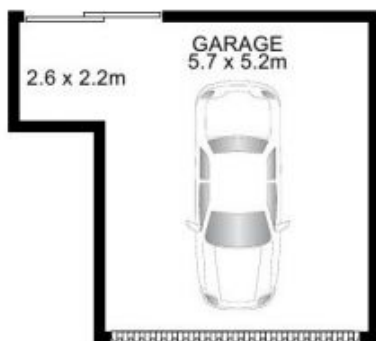
**Christina Tsousta**

 0408 577 427

 christina.tsousta@morton.com.au

[morton.com.au](http://morton.com.au)

# 107/8 Wharf Crescent, PYRMONT



NORTH

Plans by  
**surroundpix**  
com.au  
1300 30 32 40

This floor plan is intended as a guide only. Layout dimensions are approximate only. No representation or warranties of any nature whatsoever are given or intended. Any person using this information should rely on their own enquiries.