



morton.

St Leonards 208/25 Marshall Avenue



The breathtaking 'Embassy Residences' is set in a superb location, convenient to both local/CBD transport and a cosmopolitan lifestyle where you are moments walk away from St Leonards train station, cafes, restaurants, medical clinics and Royal North Shore Hospital and minutes' drive to the CBD.

- Open plan living and dining area with floorboards throughout
- Spacious north facing, covered entertainers balcony
- Stunning gas kitchen featuring Caesar stone benchtops and integrated appliances
- Generous bedroom with quality carpet and built-in wardrobes
- Abundant storage options throughout
- Ducted air conditioning, security access via audio/visual intercom
- Internal Laundry with separate Electrolux washer and dryer
- Communal garden and BBQ area
- Mere moments stroll to St Leonards train station
- Secure underground parking
- Pets subject to OC approval

morton.com.au

View

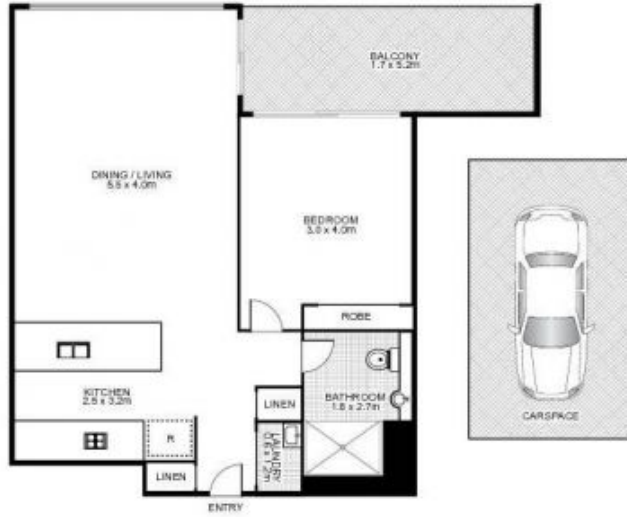
As advertised or by appointment

Agent

Joseph Youll

📞 0410 593 248

✉ joseph.youll@morton.com.au



208/25 Marshall Avenue, ST LEONARDS



This floor plan is intended as a guide only. Layout dimensions are approximate only. No representations or warranties of any nature whatsoever are given or intended. Any person using this information should rely on their own enquiries. Floor Plans by SURROUNDPIX.