



morton.

Camperdown 16D/5-11 Pyrmont Bridge Road

 2  2  1

Situated in the heart of Camperdown, DNA development represents the best opportunity to enjoy the relaxed but sophisticated living. Only 4km to CBD and 300m to Sydney University, moments to boutique cafes, restaurants and parks. This beautiful apartment is very generously portioned with cross flow layout.

- Spacious bedrooms with built-in wardrobes
- Combine living/dining areas, high quality finishes
- Generous balcony off the lounge with wooden decking
- Gourmet gas kitchen with Caesar Stone bench and European appliances
- Deluxe modern bathroom with floor to ceiling glass
- Air conditioning, video intercom
- Internal laundry with dryer, ensuite in main bedroom
- Secure parking space with lift access, communal BBQ areas
- Stunning design by Award winning Marchese Partners

View

As advertised or by appointment

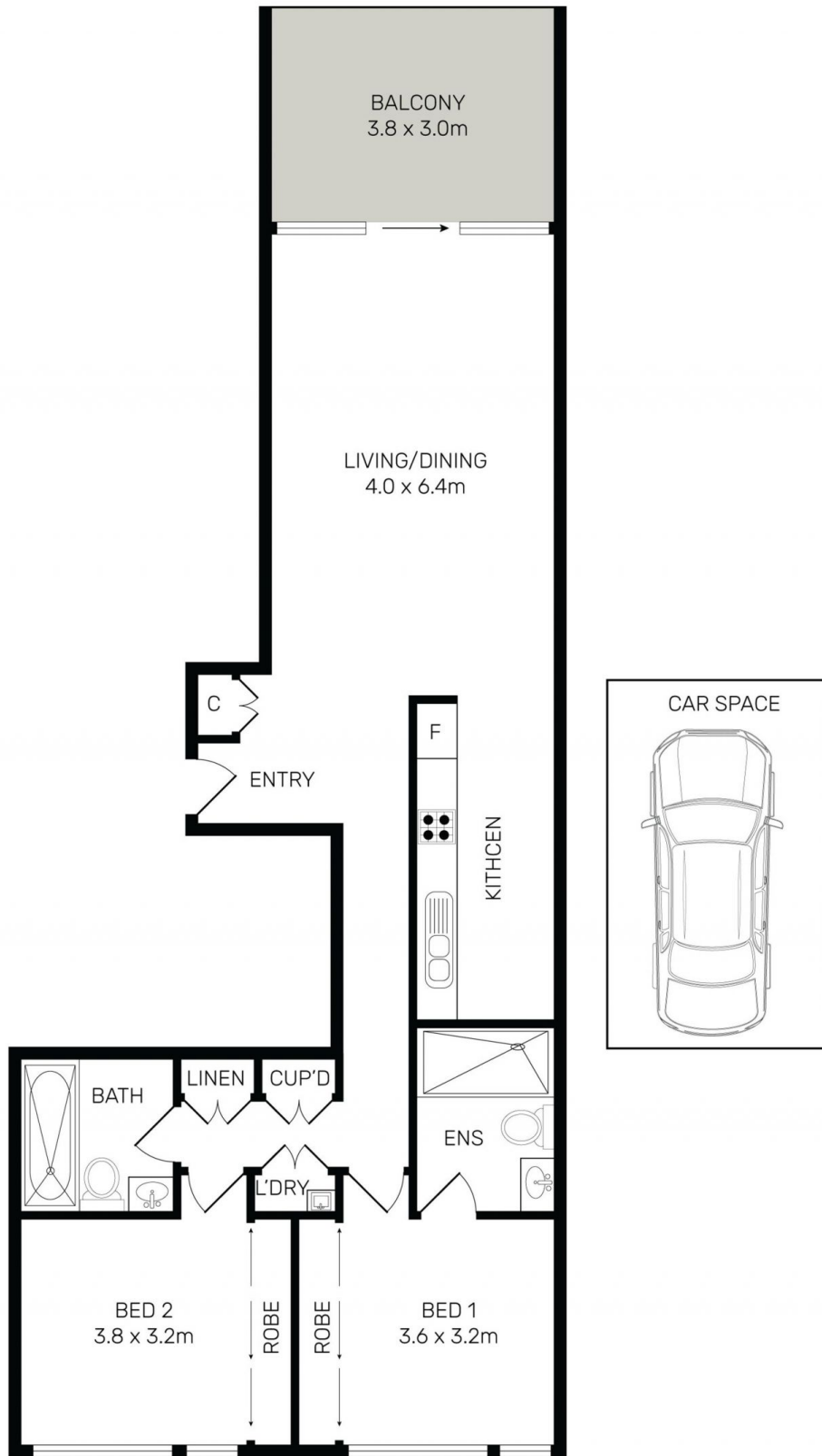
Agent

Christina Tsousta

 0408 577 427

 christina.tsousta@morton.com.au

morton.com.au



All information contained herein is gathered from all sources we believe to be reliable. However we cannot guarantee its accuracy and interested parties should rely on their own enquiries.



CampaignPROS

morton. Camperdown 16/5-11 Pymont Bridge Road