



morton.

Riverwood 523/1 Vermont Crescent

 2  2  1

Fresh, bright and displaying a smart contemporary style, this ultra-modern security apartment captures the essence of low maintenance living with designer finishes, generous proportions and a great lifestyle location. This is the perfect pad for city professionals or a great investment option as it offers easy access to Hurstville CBD, with a range of shopping, cafe and transport amenities all within a stroll from the front door.

- Generous single level layout with a light and airy open design
- Two entertainment terrace with elevated leafy outlooks
- Two double bedrooms with built-ins plus a separate study area
- Designer kitchen equipped with premium European appliances
- Security basement car space
- Air conditioning, lift access and intercom entrance
- Two designer bathrooms include one with a full bathtub
- Landscaped surrounds with shared gardens, entertainment

View

As advertised or by appointment

Agent

Ray Li

 0401 311 667

 ray.li@morton.com.au

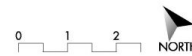
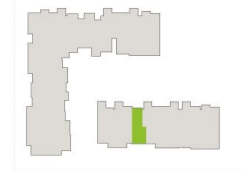
morton.com.au



**APARTMENT 523
LOT 153
2BED + STUDY**

Internal	76m ²
External	22m ²
Total	98m²

FAIRMOUNT



1300 111 088
www.washingtonpark.com.au



Disclaimer: This floor plan has been prepared for marketing purposes only. All descriptions, dimensions, depictions and other details in this floor plan may not be to scale and may vary from the property as built. Your attention is drawn to the special conditions of the contract for sale of land. No third party has any authority to make or give any representation or warranty in relation to the property unless the representation or warranty is confirmed by Payce Communities No.2 Pty Limited and included in the contract for sale of land. [Rev A. 24.07.13]

