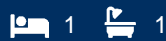




# morton.

**Waterloo** 405/8 Sam Sing Street



Bright, modern and spacious, this stunning designer apartment ensures an executive lifestyle of sophistication and convenience. This apartment within the highly sought after 'Viking' building, built by world leading Crown Developers offers plenty of space and amenities and is located only moments to East Village shopping centre, Dank Street galleries and restaurants.

- Spacious open-plan living and dining
- Oversized apartment with additional study space
- Contemporary finishes with ample storage
- Reverse-cycle ducted air-conditioning throughout
- Plenty of natural light into the property, overlooking the Rope Walk park
- Modern kitchen with dishwasher, gas cooktop and SMEG appliances
- Kitchen also features a large island bench with plenty of storage
- Large master bedroom with walk-in wardrobes and ensuite
- Internal laundry with dryer

[morton.com.au](https://morton.com.au)

### View

As advertised or by appointment

### Agents

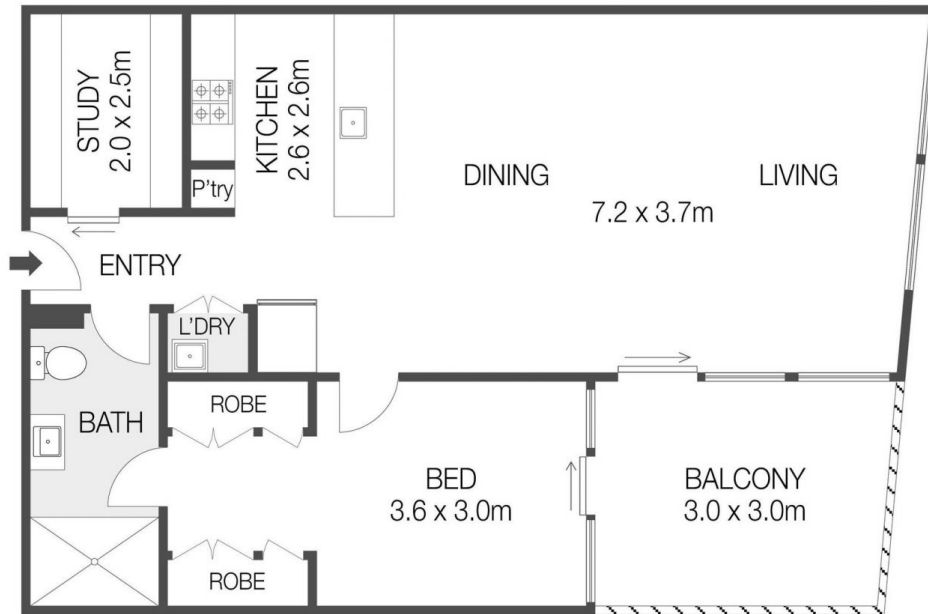
#### Sarah Fowell

📞 0437 492 129  
✉️ sarah@morton.com.au

#### Kristian Karaspyros

📞 0436 477 102  
✉️ kristian.karaspyros@morton.com.au

405/8 Sam Sing Street  
**WATERLOO**



**LEVEL FOUR**