



morton.

Pyrmont 401/25 Refinery Drive

 2  2  1

This award-winning apartment opens to embrace spectacular views across the water to the Anzac Bridge and White Bay, this stunning apartment defines effortless contemporary living in the heart of Jacksons Landing. Intuitively configured to maximise the flow of space and light, this is an offering of unquestionable quality. Benefiting from communal facilities that include tennis courts, pools and manicured gardens, it is no more than minutes to the light rail and the harbour's edge.


- In the prestigious and award winning Escarpment
- Bathed in the natural light of a north-western aspect
- Impressive open living for indoor/outdoor entertaining
- Spacious master with an ensuite and mirrored walk-in
- Sleek Caesar Stone Smeg gas kitchen
- Large balcony and European laundry
- Video intercom
- Unfurnished

View

As advertised or by appointment

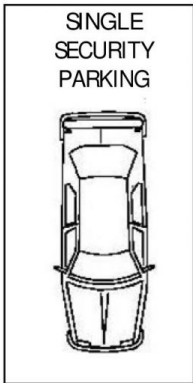
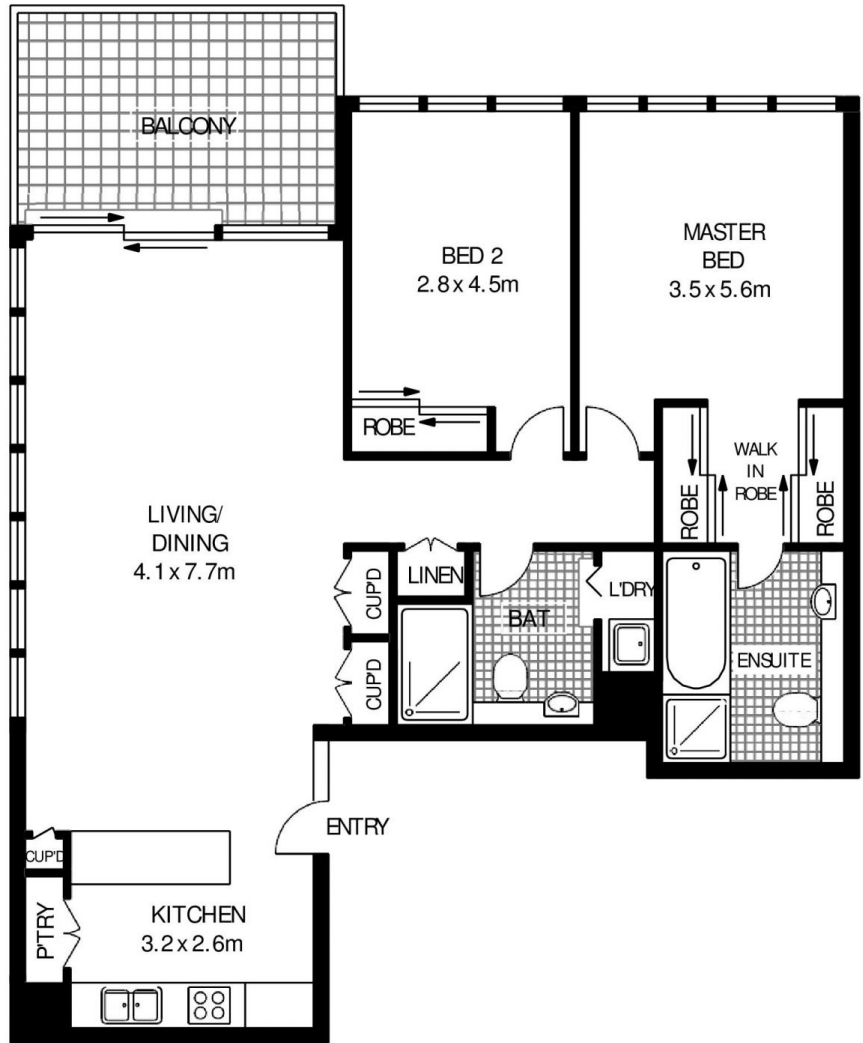
Agent

Christina Tsousta

 0408 577 427

 christina.tsousta@morton.com.au

morton.com.au



FOURTH FLOOR



401/ 25 REFINERY DRIVE

PRYMONT

SCAPE Floor Planing Disclaimer: This floor plan is conceptual only, it is provided for illustrative purposes only and should not be relied upon. We make no guarantees to the correctness of this plan. All interested parties should make and rely on their own enquiries in determining the accuracy of the information contained in this floor plan.