



morton.

Wentworth Point 285/33 Hill Road

 2  2  1

Bathed in the natural light of a western aspect and embracing superb leafy views across the treetops. This impressive residence presents a lifestyle of undeniable quality and substance. Private and peaceful, it is little more than a short walk to parks, transport and community amenities.

- Designed for effortless indoor/outdoor entertaining
- With a spacious open plan lounge and dining area
- Double bedrooms, master has ensuite and built-ins
- Huge study, gas kitchen with CaesarStone benchtops
- Large sun-washed balcony is perfect for BBQ dining
- Air conditioning
- Complex pool and gym
- Secure car space

View

As advertised or by appointment

Agent

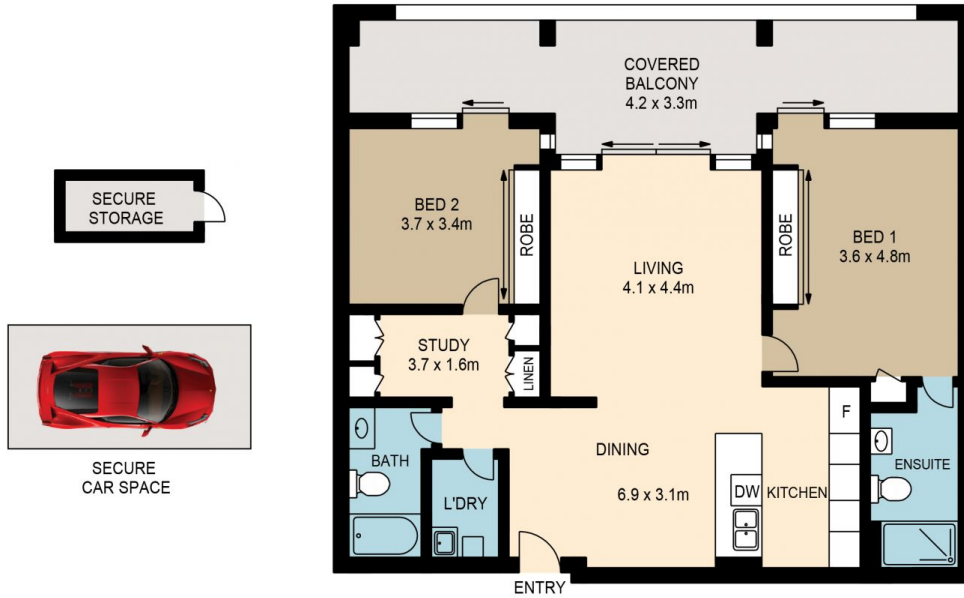
Nevena Petrovic

 0428 835 910

 nevena@morton.com.au

morton.com.au

UNIT 285/33 HILL ROAD, WENTWORTH POINT



www.assetphotographers.com.au

Please note these measurements are approximate only. The plans are intended as a rough guide for illustrative purpose. It is not warranted or guaranteed to be correct nor is it part of the sale or rental contract

