



# morton.

**Sydney** 45 Shelley Street

 2  2  1

Perched on the 5th floor of the ever popular King Street Wharf, is this spacious apartment. Consisting of a very desirable floor plan with quality finishes and ample space, has an air of modernity and style. Ideal for anyone wanting to reside in an ultra convenient location.


- Situated in a secure, small boutique building
- Freshly painted throughout
- Two large double bedrooms with large wardrobes
- Master with ensuite
- Open plan large lounge/dining/kitchen
- Designer kitchen, stainless steel appliances, ample storage
- Luxurious second bathroom
- Internal laundry
- Reverse cycle air conditioning.
- Security access to building with intercom
- Walk to Darling Harbour, CBD & fine dining on the waterfront
- Excellent 24 hour building security
- No pets

### View

As advertised or by appointment

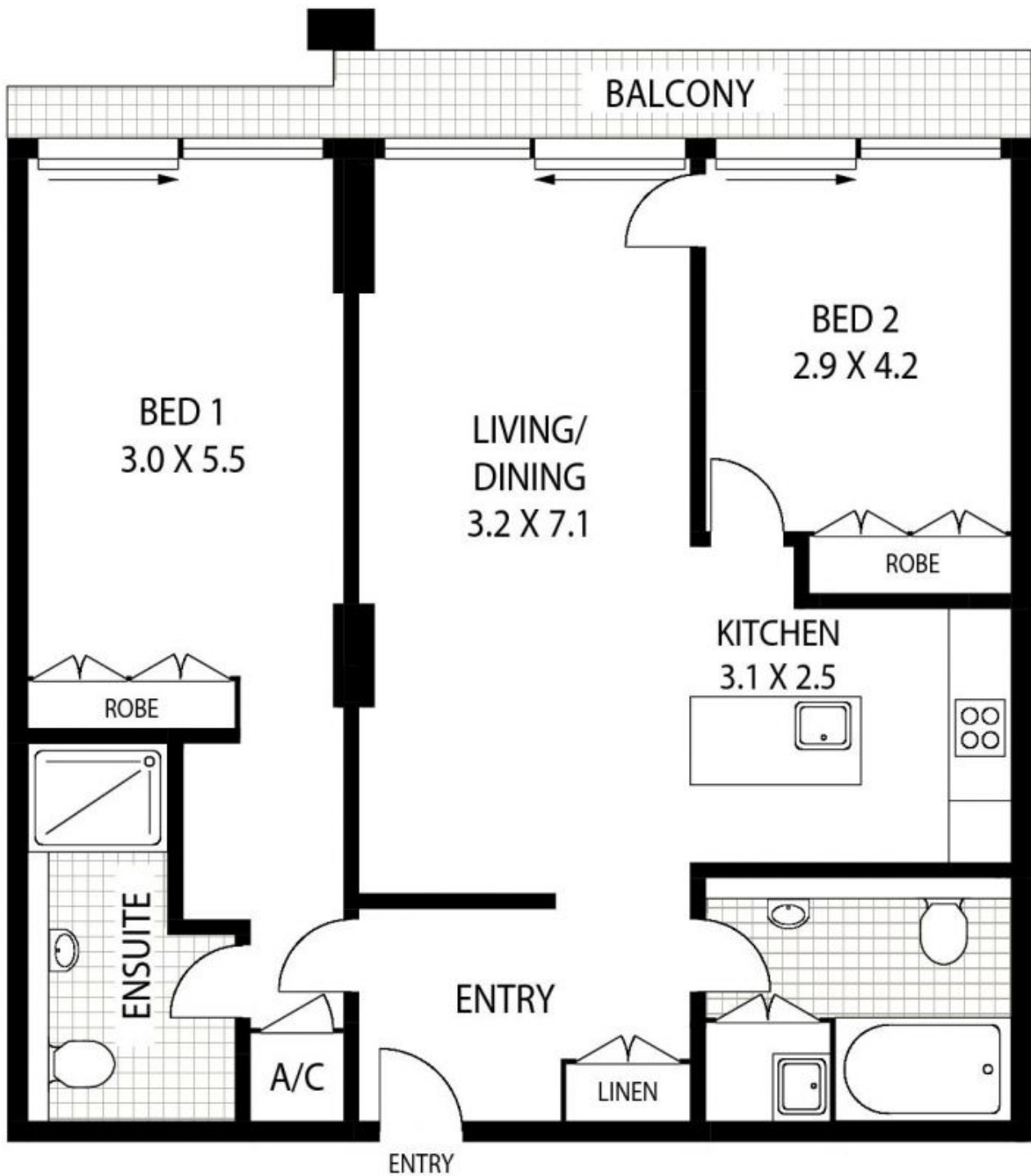
### Agent

**Christina Tsousta**

 0408 577 427

 christina.tsousta@morton.com.au

[morton.com.au](http://morton.com.au)



NOTE :- SINGLE SECURITY PARKING



512/45 SHELLEY STREET

SYDNEY

Floor plan supplied by [www.thepicturedesk.com.au](http://www.thepicturedesk.com.au). This floor plan is provided for indicative purposes only. Measurements are approximate and not to scale. The vendor, agency and supplier will accept no liability for its accuracy. Interested parties are advised to make their own independent enquiries.