



# morton.

**Kingswood** 2 Daphne Close

 4  1  5

Presented in good solid condition, is this large family home positioned at the end of a quiet cul-de-sac.

- Large kitchen/dining with stove, dishwasher, ample storage
- Sunlit family room, formal living plus alfresco outdoor area
- An expansive backyard featuring a deep level lawn
- Four good-sized bedrooms all have timber floorboards
- Air conditioning, wood fireplace and two garden sheds

The home also sits in a highly convenient location around the corner from Chapman Gardens Oval and within short walking distance to Kingswood train station, child care, Nepean Hospital, Kingswood Primary School, TAFE and Western Sydney University. The new Caddens Corner Shopping Centre in Kingswood is 1.3km away.

### View

As advertised or by appointment

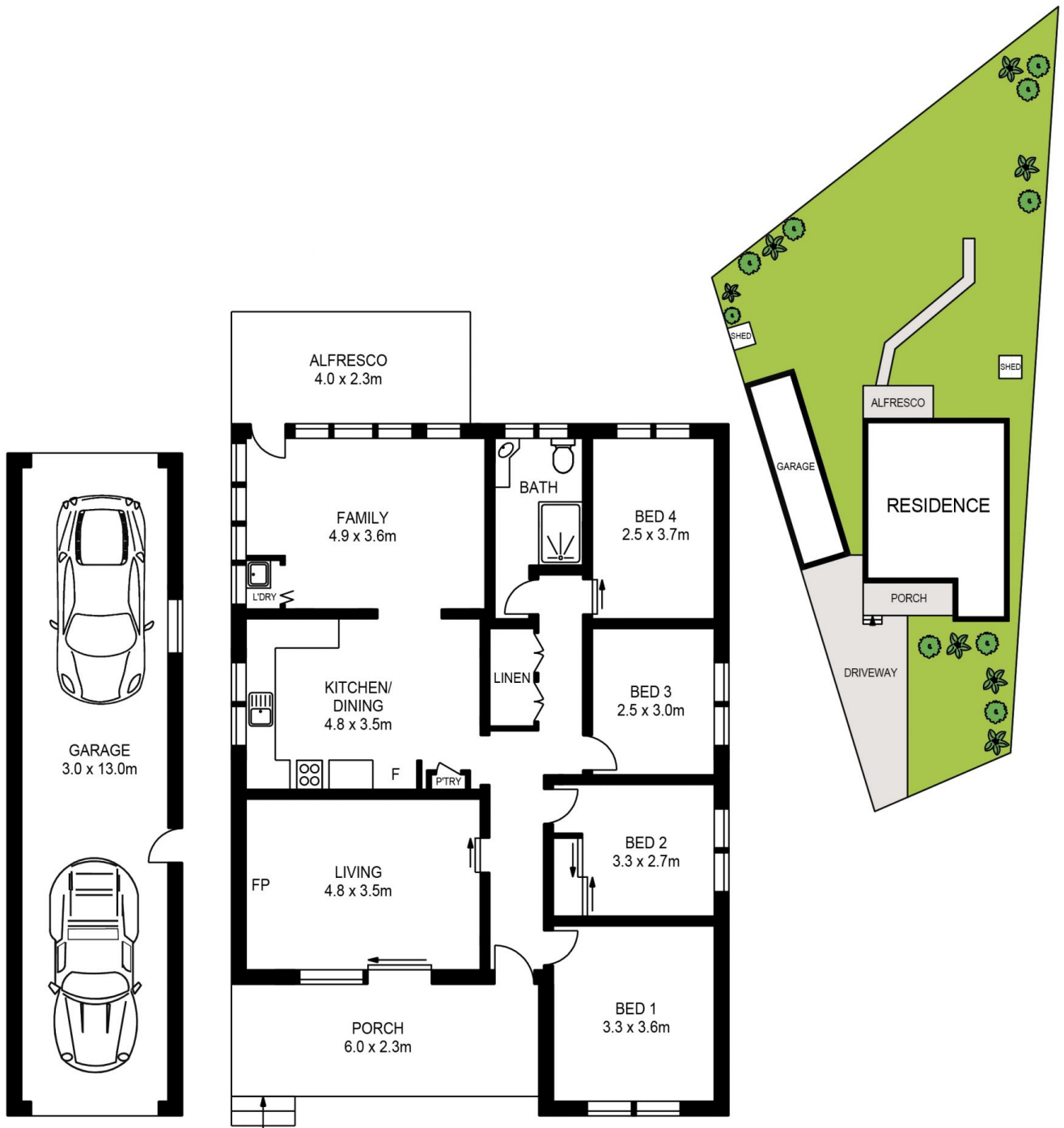
### Agent

**Amy Torbarina**

 0438 977 172

 amy@morton.com.au

[morton.com.au](http://morton.com.au)



APPROX. INT. AREA : 152m<sup>2</sup>

APPROX. EXT. AREA : 25m<sup>2</sup>

APPROX. LAND AREA : 834.7m<sup>2</sup>

## 2 DAPHNE CLOSE, KINGSWOOD



[www.assetphotographers.com.au](http://www.assetphotographers.com.au)

Please note these measurements are approximate only. The plans are intended as a rough guide for illustrative purposes. It is not warranted or guaranteed to be correct nor is it a part of the sale or rental contract.

