



morton.

Pyrmont 19F/4 Distillery Drive

 2  2  2

An elevated position in the highly regarded Sugardock complex gives this stylish apartment a stunning outlook over the harbour. Light filled throughout and capturing sweeping northerly views over the water to the Balmain Peninsula and beyond, it offers a smart and modern living space with generous proportions, many high quality finishes and a terrific location within a stroll to the harbourfront, cafes and light rail transport.

- Designed to take full advantage of the sunlight and views
- A light filled open plan layout that flows to the outdoors
- Entertainment terrace and BBQ area with sparkling vistas
- Two bedrooms include a master with ensuite and walk-in
- Sleek gourmet kitchen with island bench and gas fittings
- Separate study nook, internal laundry and great storage
- Brand new carpet throughout the apartment
- Indoor & outdoor pools, gym, tennis and steam room
- Ducted air conditioning, intercom entry and two car spaces

View



As advertised or by appointment

Agents

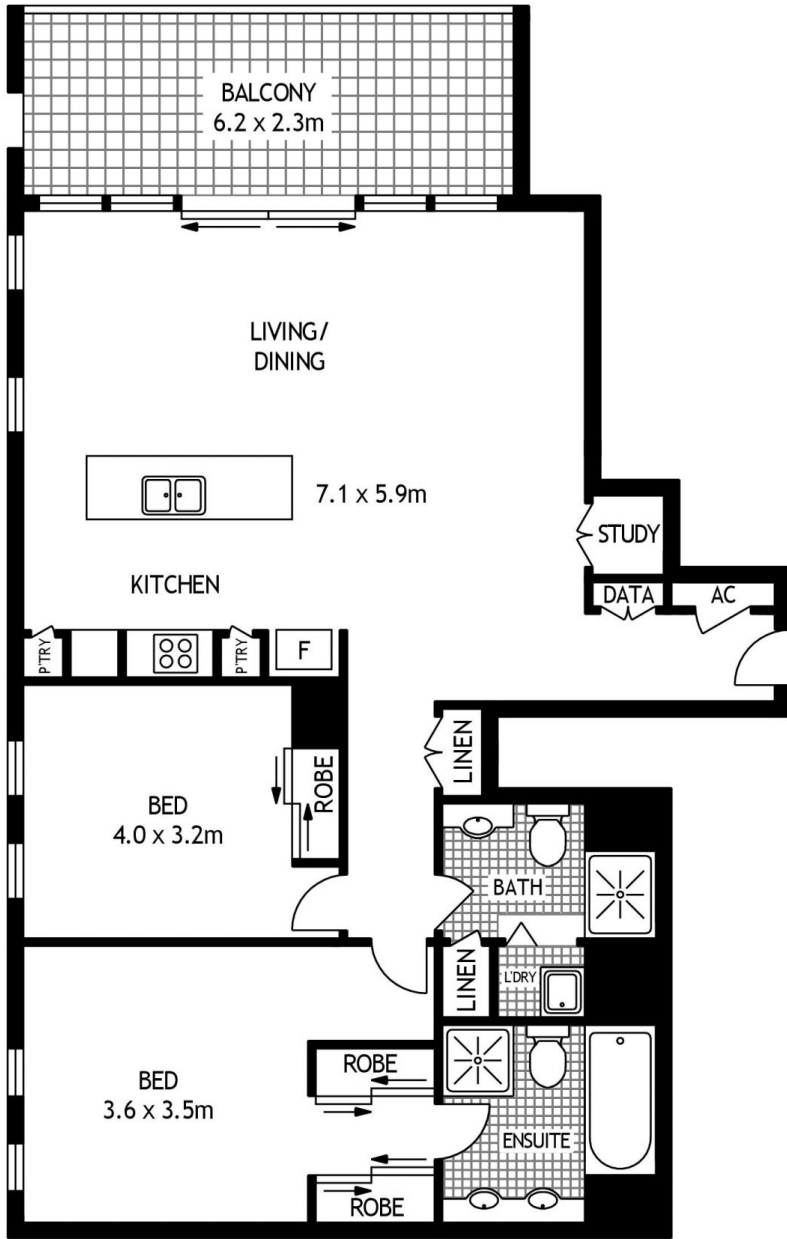
Naomie Texier

 0439 247 710
 naomie@morton.com.au

Christina Tsousta

 0408 577 427
 christina.tsousta@morton.com.au

morton.com.au

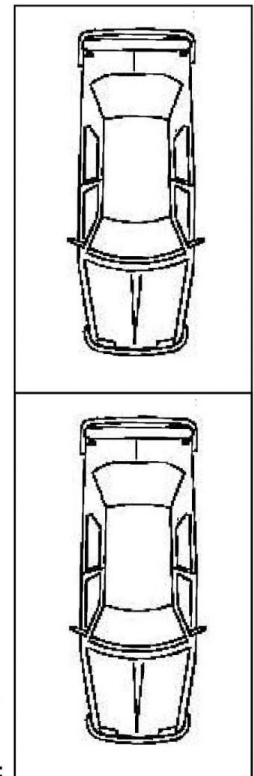


LEVEL EIGHTEEN

BASEMENT LEVEL

STORAGE CAGE

CAR SPACE



18F/4 DISTILLERY DRIVE

PYRMONT

SCAPE Floor Planing Disclaimer: This floor plan is conceptual only. it is provided for illustrative purposes only and should not be relied upon. We make no guarantees to the correctness of this plan. All interested parties should make and rely on their own enquiries in determining the accuracy of the information contained in this floor plan.