



morton.

Ermington 423/24-32 Koorine Street

 1  1  1

Sirocco offers lifestyle apartment living within the masterplanned community in Ermington. Perched on the waters edge, easy access to the river, cycleway and parks.

- North facing aspect
- Generous floorplan with winter garden
- Reverse cycle air conditioning
- Quality SMEG stainless steel kitchen appliances
- Gourmet kitchen with stone bench tops & splash back
- LED under cupboard lighting
- Wool blend carpets, efficient LED down lights
- Data/TV points in living and main bedroom
- Timber look tile in living areas & kitchen
- Secure car space + storage cage

View

As advertised or by appointment

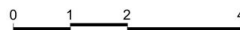
Agent

Nevena Petrovic

 0428 835 910

 nevena@morton.com.au

morton.com.au



JOINTLY DEVELOPED BY



Disclaimer: This floor plan has been prepared for marketing purposes only. All descriptions, dimensions, depictions and other details in this floor plan may not be to scale and may vary from the property as built. Your attention is drawn to the special conditions of the contract for sale of land. No third party has any authority to make or give any representation or warranty in relation to the property unless the representation or warranty is confirmed by the vendors and included in the contract for sale of land. Date issued: 05/12/14 Revision: C

SALES BY



ROYAL SHORES
SYDNEY HARBOUR

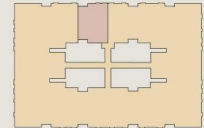
SIROCCO II



**APARTMENT 423
LOT 109**

1 BEDROOM

Internal (Including All Seasons Living Room)	89 sqm
Total	89 sqm



SIROCCO II - LEVEL 4

ROYAL SHORES DISPLAY CENTRE
1 Burdarra Street, Ermington NSW 2115
P 1300 888 558 W royalshores.com.au