



morton.

Artarmon 22/8 Jersey Road

 2  1  1

Tucked away from the road in peaceful verdant surrounds lies this updated and idyllic townhouse. Featuring generous proportions throughout, renovated kitchen and stunning entertainers courtyard this abode is perfectly positioned moments from public transport, schools, parks and local eateries.

- Freshly painted throughout
- Updated electric kitchen with dishwasher and abundant storage options
- Two bedrooms, main with walk-in wardrobe and private balcony
- Combined lounge and dining with timber flooring flows to over-sized courtyard
- Character bathroom with updated tapware, separate shower and bath tub
- Internal laundry and guest powder room downstairs
- Private entrance off rear lane way
- Easy access to basement with lock up garage

View

As advertised or by appointment

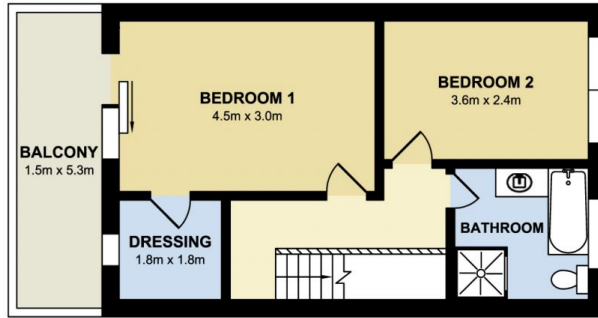
Agent

Joseph Youll

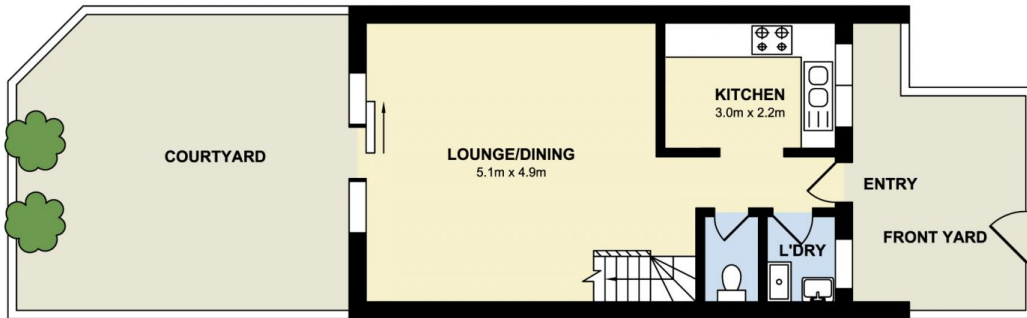
 0410 593 248

 joseph.youll@morton.com.au

morton.com.au



UPPER LEVEL



LOWER LEVEL

