



# morton.

Penrith 506/81C Lord Sheffield Circuit

🛏 2 🚿 2 🚗 1

Located in the hub of North Penrith, this large 100 sqm two-bedroom apartment offers convenient apartment living in a master-planned community, features with a kingsized master bedroom and spacious living and outdoor balcony, only metres from the Penrith rail hub, Westfield shopping centre and local parks.

#### Features

- Kingsized master bedroom, built-in mirrored robes, quality ensuite
- Timbered open living and dining area, LED lighting throughout
- Filled with natural light from the floor to ceiling windows
- Reverse cycle air conditioning, block-out roller blinds throughout
- Eat-in kitchen with stone bench-tops, soft close cupboards
- Four burner stove top with stainless steel appliances
- Wool-blend carpeted bedroom with mirrored built-in robes
- NBN ready, MATV/PayTV points in living & bedroom
- Quality bathroom with mirrored vanity cabinet

[morton.com.au](http://morton.com.au)

#### View

As advertised or by appointment

#### Agent

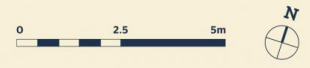
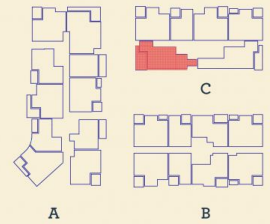
**Amy Torbarina**

📞 0438 977 172

✉ [amy@morton.com.au](mailto:amy@morton.com.au)

*Apartment*

2 BED- C 506



Internal	80 m <sup>2</sup>
External	20 m <sup>2</sup>
<b>Total</b>	<b>100 m<sup>2</sup></b>

DATE ISSUED 27/07/2015  
VERSION 02

Developed by St Hilliers FIRST POINT PROJECTS | Sales by LINK Home Land Direct [thorntoncentral.com.au](http://thorntoncentral.com.au)

**Disclaimer:** This floor plan has been prepared for marketing purposes only. All descriptions, dimensions, depictions and other details in this floor plan (together, the "Information") may not be to scale. The vendor reserves the right to vary or amend the Information without notice. The Information may vary from the actual dimensions, layout and characteristics of the property as built. No third party has any authority whatsoever, either expressly or impliedly, to make or give any representation or warranty or to bind the vendor in connection with the information or the property.

**THORNTON**