



morton.

North Sydney 403/26 Napier Street

1 1 1

Nestled in a secluded laneway this spacious north facing 1 bedroom plus study is a short stroll to North Sydney's business and entertainment hub. Characterized by great natural light and soaring ceilings.

- Large open plan living opens to north facing balcony
- Kitchen enjoys stainless steel appliances and granite bench tops
- Master bedroom with built-in wardrobes
- Separate study area and internal storage
- Internal pool, gym, intercom and lift access
- Reverse cycle air conditioning and secure under cover parking

View

As advertised or by appointment

Agent

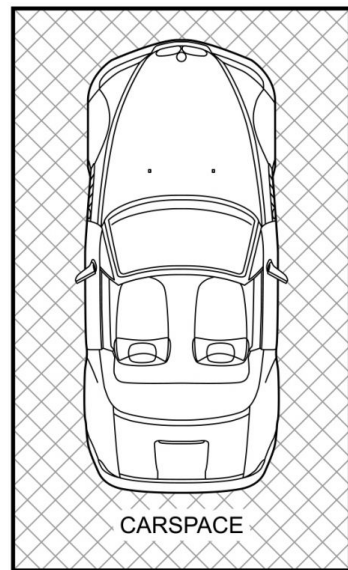
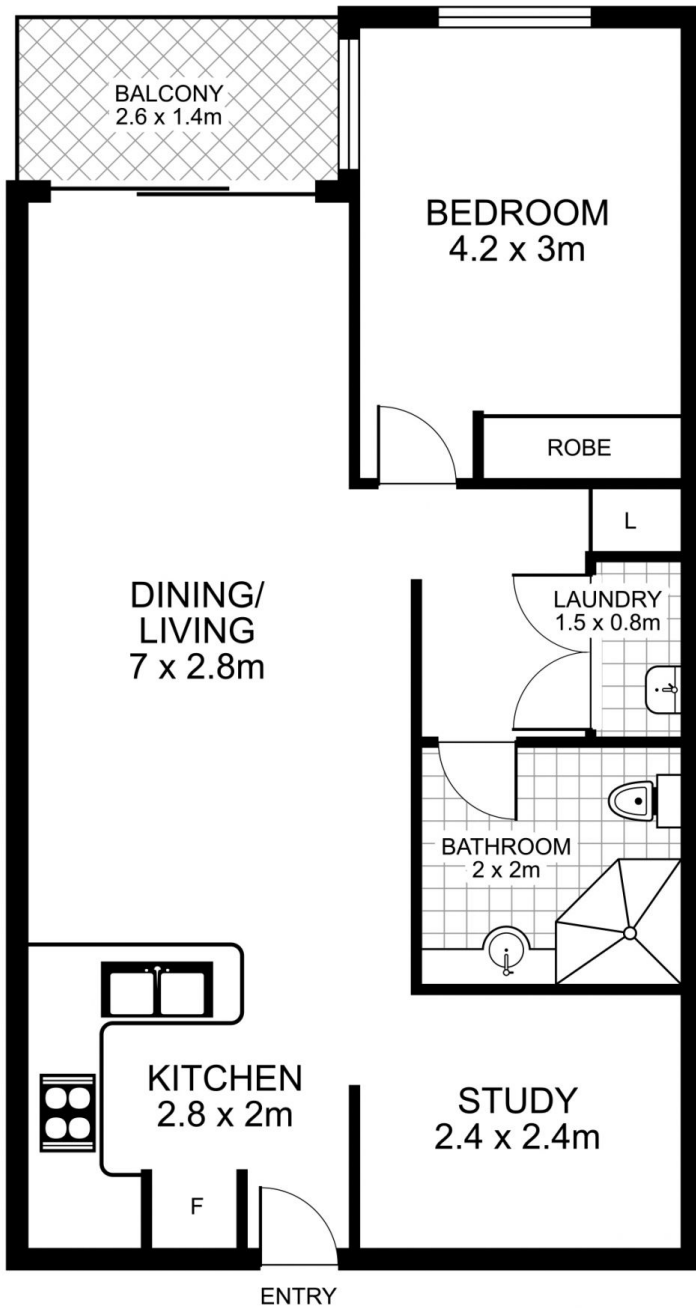
Joseph Youll

0410 593 248

joseph.youll@morton.com.au

morton.com.au

403/26 Napier Street, NORTH SYDNEY



an is intended as a guide only. Layout dimensions are approximate only. No representations or warranties of any nature are given or intended. Any person using this information should rely on their own enquiries

Plans by