



morton.

Alexandria 62A/252 Botany Road

 2  2  1

An oversized split-level layout, resort style facilities and an ultra-convenient address all combine to provide an outstanding lifestyle residence in this private security apartment. Just a short stroll to Green Square Station, shops and city buses, this spacious apartment features timber flooring throughout.

- Split-level floorplan designed for easy living/entertaining
- Sliding glass doors open to an entertainment terrace
- Good sized bedrooms with built-in robes, main with ensuite
- Open plan lounge and dining zones opening to large balcony
- Timber flooring throughout with ample storage space
- Modern CaesarStone kitchen, European gas appliances
- Access to complex swimming pool, gym, entertaining areas
- Lift access to secure basement parking with one car space
- Walk to The Grounds restaurant and other celebrated eateries
- Short stroll to Green Square station

View

As advertised or by appointment

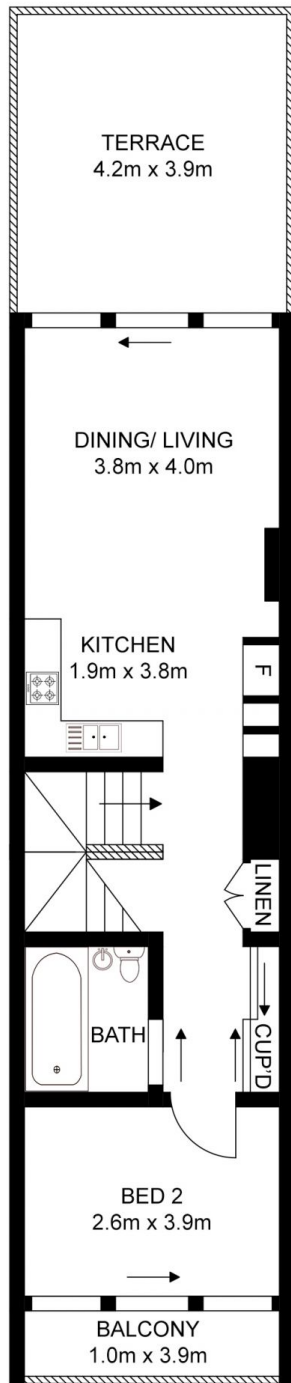
Agent

Kristian Karaspyros

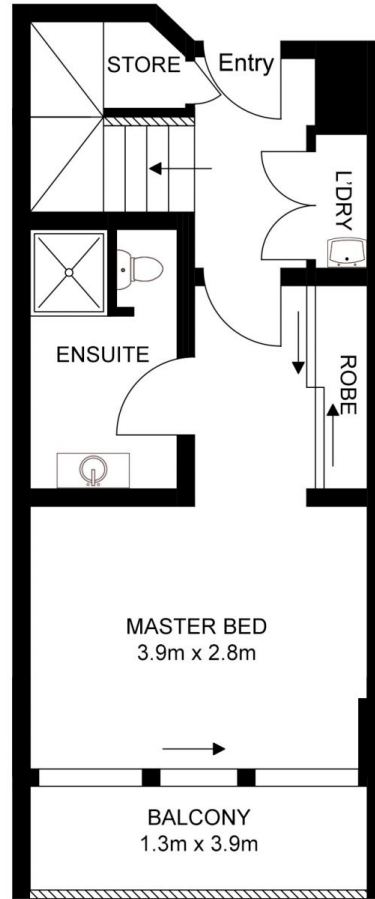
 0436 477 102

 kristian.karaspyros@morton.com.au

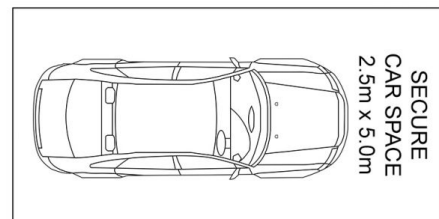
morton.com.au



UPPER LEVEL



ENTRY LEVEL



All information contained herein is gathered from all sources we believe to be reliable. However we cannot guarantee its accuracy and interested parties should rely on their own enquiries.

