



morton.

Zetland 420/1 Hutchinson Walk

 1  1  1

This great sized one-bedroom residence creates an instant impact with its generous proportions, sleek designer finishes and luxury on-site leisure facilities. It is set within a prestige architectural complex and offers a quality lifestyle property that has all the amenities of Victoria Park, East Village and Green Square station a stroll from the front door.



- Bright open plan design featuring living and dining areas
- Level access to a private balcony with elevated outlooks
- Double bedroom with built-in plus a separate study
- Designer kitchen with dishwasher and Miele gas appliances
- Fresh modern decor and easy-to-maintain tiled flooring
- Good-sized designer bathroom plus an internal laundry
- Air conditioning, video intercom, data/TV points, LED lighting
- Exclusive access to the building's premium resort amenities
- Secure Car Space
- Storage Cage

View



As advertised or by appointment

Agents

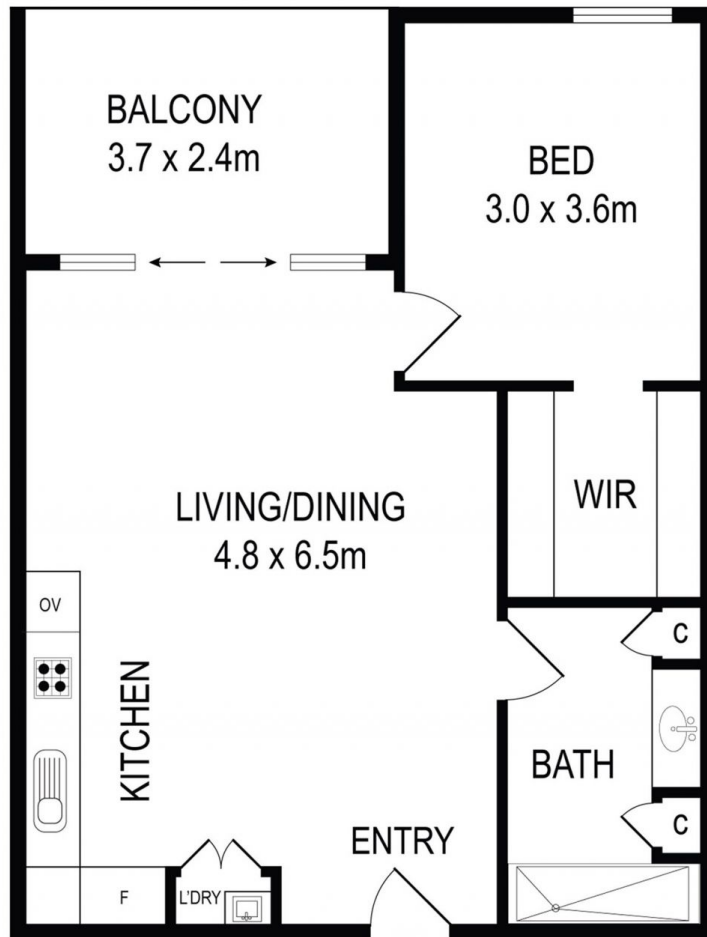
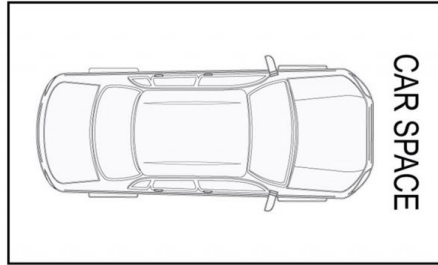
Calvin Chan

 0406 888 028
 calvin@morton.com.au

Jackson Figueiras

 0448 764 345
 jackson@morton.com.au

morton.com.au



All information contained herein is gathered from all sources we believe to be reliable. However we cannot guarantee its accuracy and interested parties should rely on their own enquiries.



CampaignPROS