



morton.

North Sydney 1006/225-235 Pacific Highway

1 1 1

With stunning harbour and district views, this modern apartment on Level 10 offers exceptional lifestyle, space and convenience. Full complementary access is provided to in-house amenities on the roof level, including a large gym, 25m lap pool and barbecue and lounge area. Only a short stroll to the heart of North Sydney residents can easily access a wide range of café, dining, shops, the Mater hospital, schools and public transport options.

- Spacious master with built-in wardrobes and balcony access
- Study/multipurpose room with built-in wardrobe
- Full length entertainers balcony with expansive harbour and district views
- Modern kitchen with European appliances including dishwasher
- Secure parking for one vehicle and adjacent storage cage
- Reverse cycle air-conditioning and NBN ready
- Internal laundry with dryer
- Concierge, rooftop gardens and infinity pool with panoramic harbor views

View

As advertised or by appointment

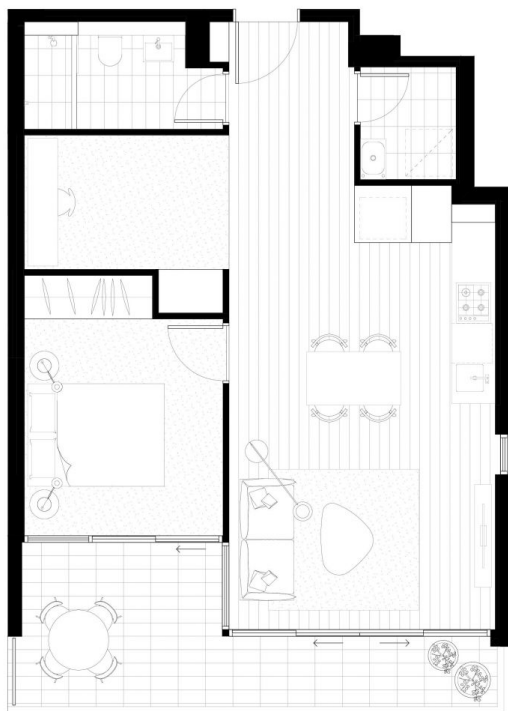
Agent

Joseph Youll

0410 593 248

joseph.youll@morton.com.au

morton.com.au



Disclaimer: The particulars are set out as a general outline for the guidance of intending purchasers and do not constitute an offer or contract. All descriptions, dimensions, references to conditions and necessary permissions for use and other details are given in good faith and are believed to be correct, but any intending purchasers should not rely on them as statements or representations of fact, but must satisfy themselves by inspection or otherwise to the correctness of each item, and where necessary seek advice. No third party supplier or their agents has any authority to make or give any representations or warranty in relation to this property.

GREENLAND PRESENTS

LUCENT

NORTH SYDNEY

UNIT NUMBER

706, 806, 906, 1006, 1106,
1206, 1306, 1506



ONE BEDROOM + STUDY APARTMENT

Internal Area 56m²

External Area 12m²

Total Area 68m²



1800 207 778
lucentnorthsydney.com.au

