



morton.

Penrith 1007/10 Aviators Way

 1  1  1

Perched on levels 10 and 11 in the highest position in Thornton, north east facing with 94 sqm of living area, makes this huge 1-bed penthouse the size of a large 2-bed apartment, ideal for someone wanting it all.

- Spectacular oval and Blue Mountains views from the covered balcony
- Open living and dining area with floorboards and air con, leading to the carpeted staircase with double windows panes bursting with morning sun
- Upstairs carpeted bedroom quarters with mirrored walk-in robes, air con and ensuite with dual access as a guest bathroom
- Study nook upstairs including storage room and internal laundry with dryer
- Mirror splashback to the stylish galley kitchen, 4 burner gas cooktop, Omega appliances, including a dishwasher
- Powder room downstairs as second toilet
- Pet friendly building with 102 apartments and 2 lifts, built 2018, with secure basement parking and storage cage, NBN

View

As advertised or by appointment

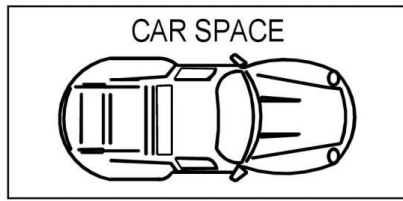
Agent

David Lipman

 0409 663 535

 david@morton.com.au

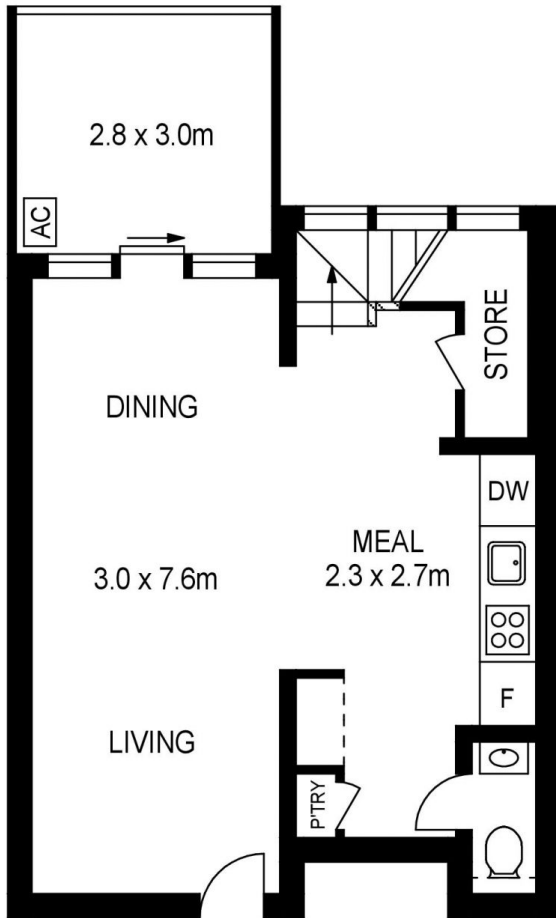
morton.com.au



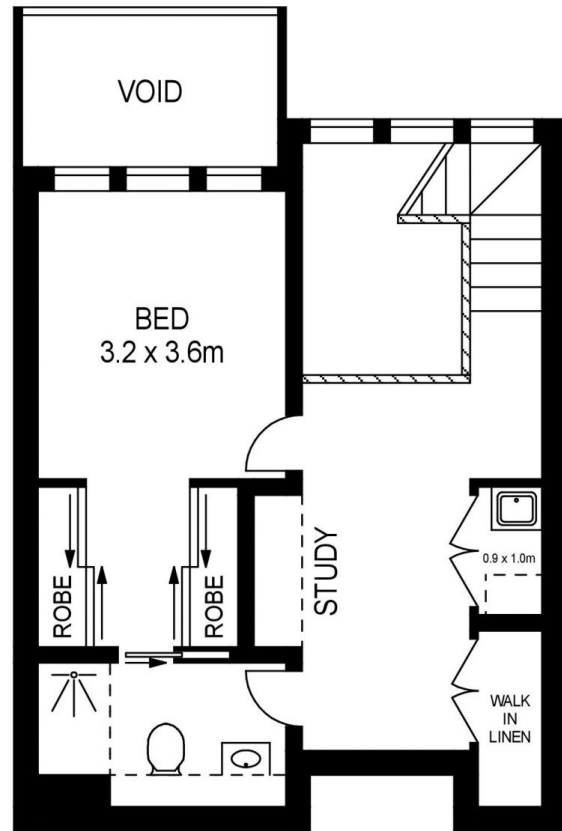
**BASEMENT 2
NO.85**



**BASEMENT 2
NO.59**



ENTRY LEVEL



UPPER LEVEL

APPROX. INT. AREA : 86m²
 APPROX. EXT. AREA : 8m²
 TOTAL AREA INCLUDING
 CAR SPACE AND STORAGE CAGE : 108m²

1007/10 AVIATORS WAY, PENRITH



Please note these measurements are approximate only. The plans is intended as a rough guide for illustrative purpose. It is not warranted or guaranteed to be correct nor it is part of the sale or rental contract

