



morton.

Wentworth Point 312/19 Hill Road

 2  2  1

With respect to the latest government's COVID-19 restrictions we will be conducting open homes and private appointments with mandatory face masks, sanitisation, QR code check ins, and 1 person per 4sqm. Please submit an enquiry or contact the agent to be kept up to date with inspection times and register your attendance for viewings.

Located in Sorrento at The Waterfront, here is your opportunity to move into this spacious north facing split level two bedroom apartment. Only a short stroll to The Piazza, local restaurants, convenience and pharmacy stores, and ferry services to Parramatta and Sydney CBD, with public transport links at your doorstep to Burwood and Sydney Olympic Park. The Waterfront is located moments to Sydney Olympic Park main venues and train station, Bicentennial Park and Millennium Parkland.

- Open plan living and dining flowing to north facing covered entertainer's balcony
- Modern gas kitchen with premium stainless steel appliances


morton.com.au

View

As advertised or by appointment

Agent

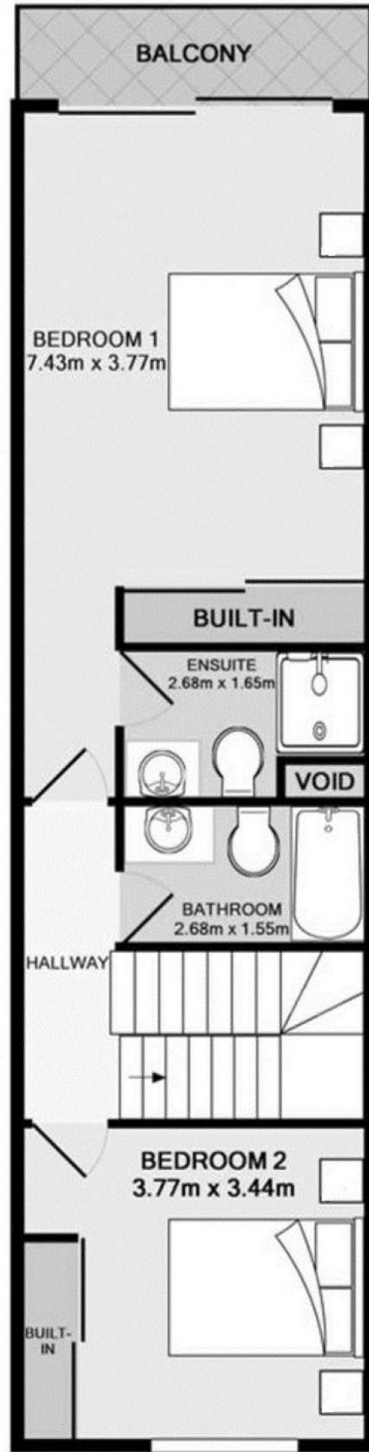
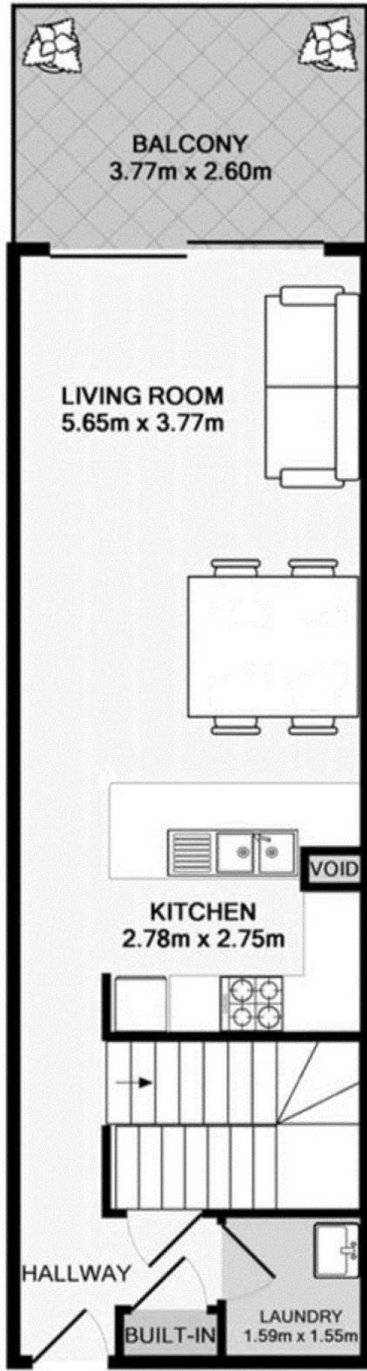
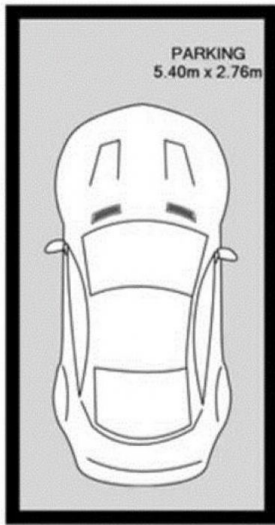
Nevena Petrovic

 0428 835 910

 nevena@morton.com.au



STORAGE



Disclaimer: Floor plans and site plans are intended as a guide only. They are not part of any legal document or title and are subject to errors, omission, and inaccuracies and should not be used as reference. Sizes and dimensions are approximate only. Interested parties should make their own enquiries.