



morton.

Wentworth Point 301/41 Amalfi Drive

🛏 1 🚿 1 🚗 1

Ideally placed in a prized north-eastern corner setting, this fully renovated apartment offers a private lifestyle of comfort, convenience and quality. Just a few short moments to the heart of Wentworth Point Village, this well proportioned residence flows over an intuitively designed 70sqm.

- Fully renovated one bedroom with unique floor plan
- Open plan lounge and dining area flows to a balcony
- Chic Caesar-Stone kitchen, brand new stainless steel appliance, gas cooktop and breakfast bar
- Impressive master bedroom has two built-in wardrobes
- Air conditioning, high ceilings with fans and a storage cage
- Stylish bathroom with bathtub and European laundry
- Ample visitor parking, free membership to Pulse Gym

View

As advertised or by appointment

Agents

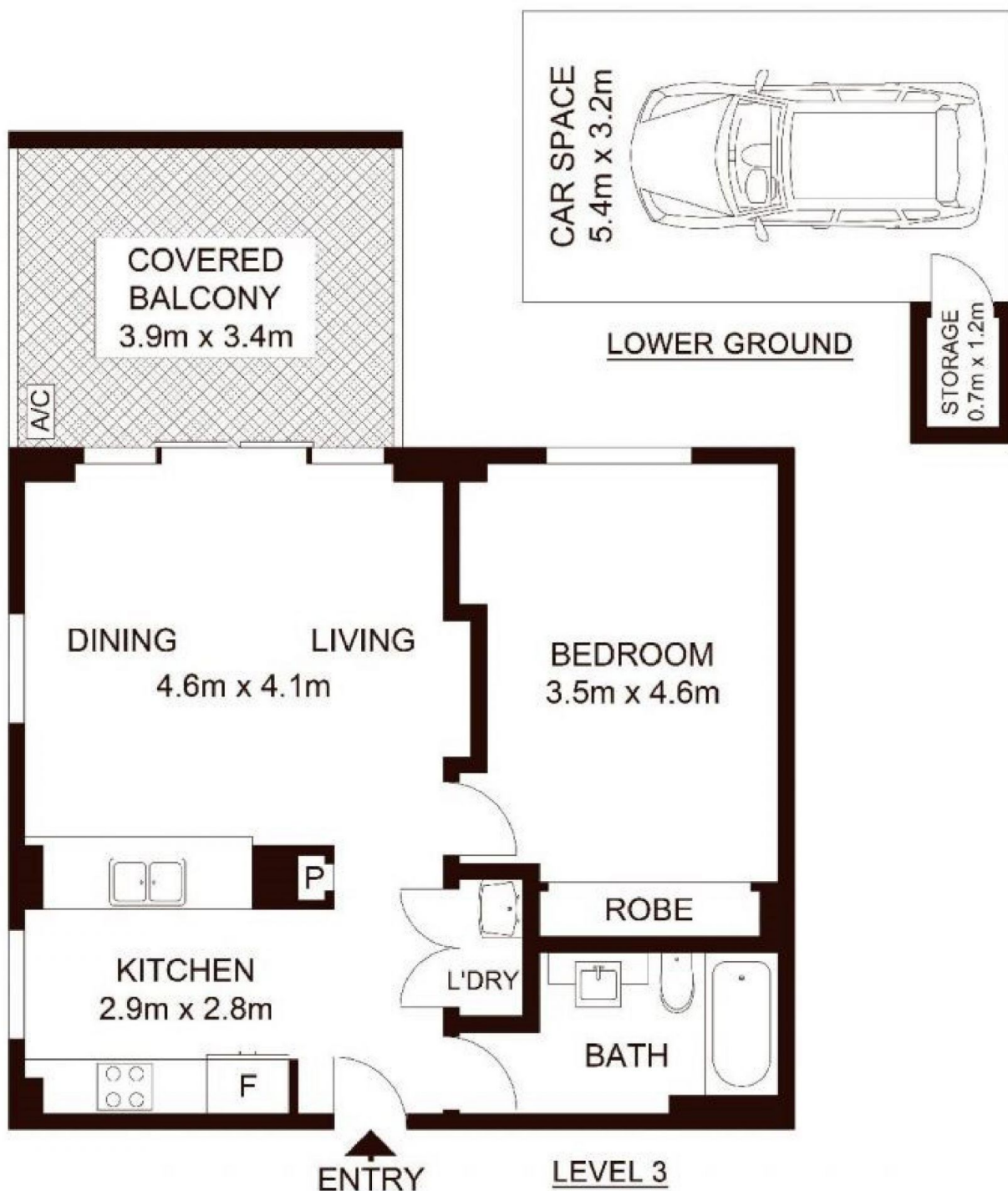
Dylan Choe

📞 0416 932 977
✉ dylanchoe@morton.com.au

Akanksha Chaudhari

📞 0447 201 786
✉ akanksha@morton.com.au

morton.com.au



INTERNAL : 57m²
 EXTERNAL : 13m²
 CAR SPACE : 17.8m²

morton.

301/41 Amalfi Drive, WENTWORTH POINT

Not to scale • All measurements are approximate • Drawn for marketing purposes only • Floorplan by © Industrie Media

