



morton.

Sydney 405/4 Bridge Street

🏠 2 📄 1

With the benefit of residential and commercial use, this immaculately presented apartment is perfectly suited for easy-care living, inner city business space, secure pied-a-terre or solid investment. With a beautiful heritage façade, the striking Cliveden is positioned in the prestigious northern end of the CBD. Metres from George Street, enjoy effortless access to the new light rail, Circular Quay Train and Ferry terminals as well as the financial district of Sydney CBD.

- Flexible dual zoned building, residential/commercial use, north east aspect
- You have the option of short and long term rental options, high growth area
- Open plan living and dining area, soaring ceilings, oversized windows
- Tiled bathroom with multiple storage areas and internal laundry space
- Ducted air-conditioning throughout, security building with lift access
- Prominent heritage facade, rooftop terrace with pool & spa

View

As advertised or by appointment

Agents

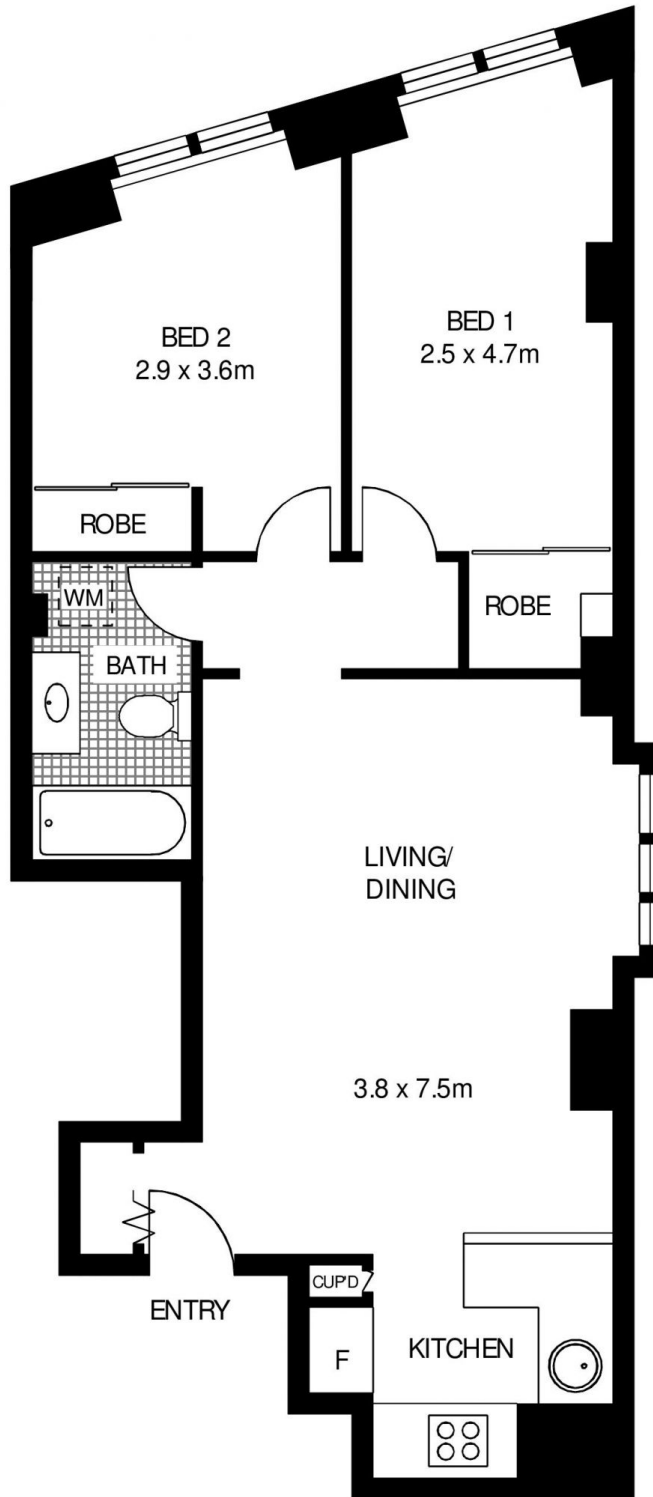
Ettiene West

📞 0410 593 749
✉ ettiene@morton.com.au

Ian Qiu

📞 0447 696 425
✉ ian@morton.com.au

morton.com.au



FOURTH FLOOR



405/4 BRIDGE STREET

SYDNEY

SCAPE Floor Planning Disclaimer: This floor plan is conceptual only. It is provided for illustrative purposes only and should not be relied upon. We make no guarantee as to the correctness of this plan. All interested parties should make and rely on their own enquiries in determining the accuracy of the information contained in this floor plan.