



morton.

Penrith 506/26C Lord Sheffield Circuit

 2  2  1

This stunning apartment set in the Lumina building in Thornton is right in the middle of Penrith's emerging urban centre. This two bedroom unit has an area of 93sqm worth of indoor/outdoor living space. Located on the 5th floor, its smart design offers bedrooms on either side of the unit for privacy and comfort.

- Generous 93sqm of living area
- Ducted air con and floorboards throughout
- Large eat in kitchen island bench with 4 burner gas cooktop
- Internal laundry running off the kitchen and study nook
- Two good sized double bedrooms, master with ensuite
- Second bedroom with access to the balcony
- Rooftop BBQ area with pingpong table, swing and pet friendly areas
- Rooftop herb garden for all residents of the building
- Currently tenanted (expired lease)

View

As advertised or by appointment

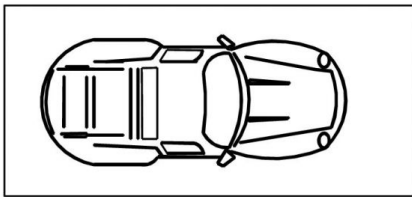
Agent

David Lipman

 0409 663 535

 david@morton.com.au

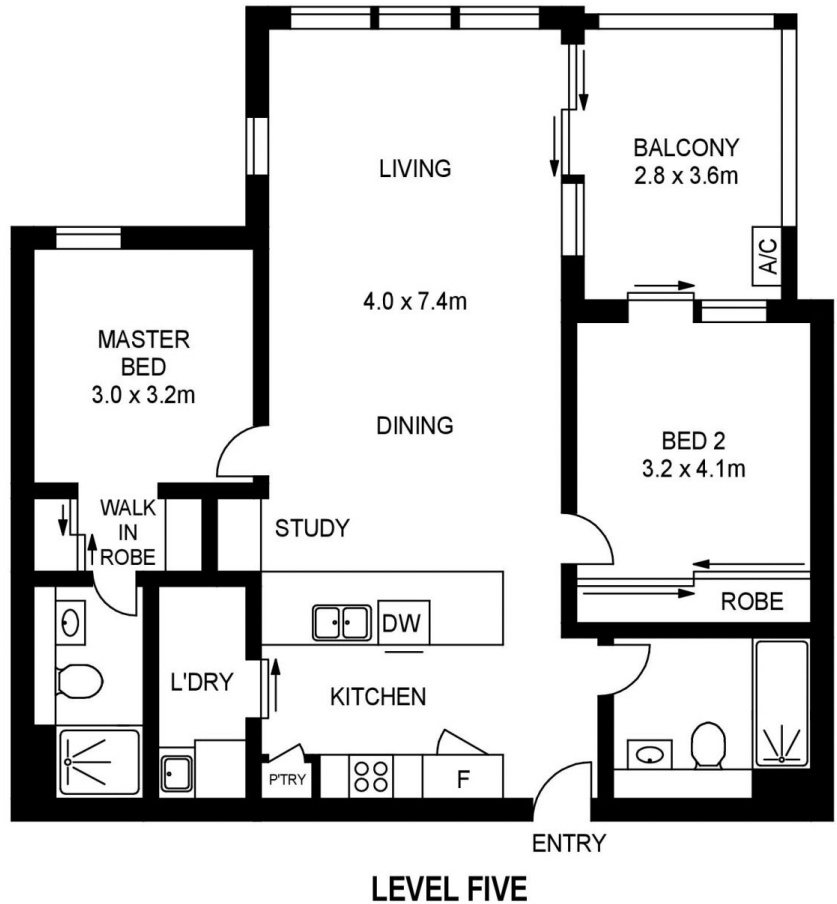
morton.com.au



**CAR SPACE NO 506
LEVEL B2**



**STORAGE CAGE NO 506
LEVEL B2**



APPROX. INT. AREA : 83m²
APPROX. EXT. AREA : 10m²
TOTAL AREA INCLUDING
CAR SPACE AND STORAGE CAGE : 107m²

506/26C LORD SHEFFIELD CIRCUIT, PENRITH



www.assetphotographers.com.au

Please note these measurements are approximate only. The plans are intended as a rough guide for illustrative purpose. It is not warranted or guaranteed to be correct nor is it part of the sale or rental contract

