



morton.

Wentworth Point 2306/46 Savona Drive

 1  1  1

With respect to the latest government's COVID-19 restrictions we will be conducting open homes and private appointments with mandatory face masks, sanitisation, QR code check ins, and 1 person per 4sqm. Please submit an enquiry or contact the agent to be kept up to date with inspection times and register your attendance for viewings.

Situated within the sought after Taiga building this is your chance to to see this spacious one bedroom apartment with timber flooring.

With convenient access to shops, cafés and the footbridge to Rhodes, this apartment offers lifestyle with great water views.

- Luxurious timber flooring
- Spacious study
- Located on level 23 with water views
- Good size bedroom with built-in wardrobe
- Full size kitchen with gas cooking & quality stainless steel appliances
- Open plan living + dining area

morton.com.au

View

As advertised or by appointment

Agent

Nevena Petrovic

 0428 835 910

 nevena@morton.com.au

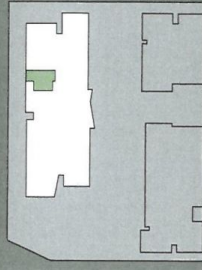
the ADDRESS

WENTWORTH POINT

TAIGA

APARTMENT A2306
1 Bed/1 Bath

Internal Area 62 sqm
External Area 5 sqm
Total Area 70 sqm



Level 23
0 5 10



KEY

- 01 Entry
- 02 Living
- 03 Dining
- 04 Kitchen
- 05 Bathroom
- 06 Laundry
- 07 Balcony
- 08 Robe
- 09 Store
- 10 Bedroom
- 11 Utility

J800 333 818

TheAddressApartments.com.au

