



# morton.

**Ermington** 142/64 River Road

 1  1  1

With respect to the latest government's COVID-19 restrictions we will be conducting open homes and private appointments with mandatory face masks, sanitisation, QR code check ins, and 1 person per 4sqm. Please submit an enquiry or contact the agent to be kept up to date with inspection times and register your attendance for viewings.

Located in the urban hub of Royal Shores, Sirius offers lifestyle apartment living within the masterplanned community in Ermington. Perched on the waters edge, Sirius offers easy access to the river, cycleway and parks.

- Reverse cycle air conditioning
- Good size floorplan with study nook
- Quality SMEG stainless steel kitchen appliances
- Stone bench tops & splash backs
- LED under cupboard lighting
- Quality wool blend carpets
- Data/TV points in living and main bedroom
- Recessed mirrored cabinets in bathroom

[morton.com.au](http://morton.com.au)

### View

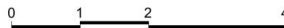
As advertised or by appointment

### Agent

**Nevena Petrovic**

 0428 835 910

 [nevena@morton.com.au](mailto:nevena@morton.com.au)



JOINTLY DEVELOPED BY



Disclaimer: This floor plan has been prepared for marketing purposes only. All descriptions, dimensions, depictions and other details in this floor plan may not be to scale and may vary from the property as built. Your attention is drawn to the special conditions of the contract for sale of land. No third party has any authority to make or give any representation or warranty in relation to the property unless the representation or warranty is confirmed by the vendors and included in the contract for sale of land. Date Issued: 03/10/14 Revision: A

SALES BY

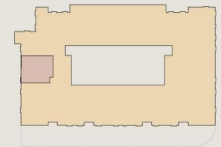


**ROYAL SHORES**  
SYDNEY HARBOUR

**SIRIUS**  
**APARTMENT 142**  
**LOT 223**

1 BEDROOM

Internal	60 sqm
External	9 sqm
<b>Total</b>	<b>69 sqm</b>



SIRIUS - LEVEL 1

**ROYAL SHORES DISPLAY CENTRE**  
1 Burdarra Street, Ermington NSW 2115  
P 1300 888 558 W royalshores.com.au