



**morton.**

**Zetland** 601/2 Victoria Park Parade

 2  2  1

Wonderfully positioned in the bustling precinct in Victoria Park, the 'Stella' apartments will provide a new level of living. 'Stella' is superbly designed by Tzannes Associates to maximise light, open spaces and cross-flow ventilation.

- Floating timber floors throughout
- Kitchens include CaesarStone bench tops and Miele appliances
- Polyurethane finish joinery with ample storage
- Bathrooms with Italian fittings, and
- Feature wall tiles and mirrored storage cabinets
- Includes caged storage and video intercom

**View**

As advertised or by appointment

**Agent**

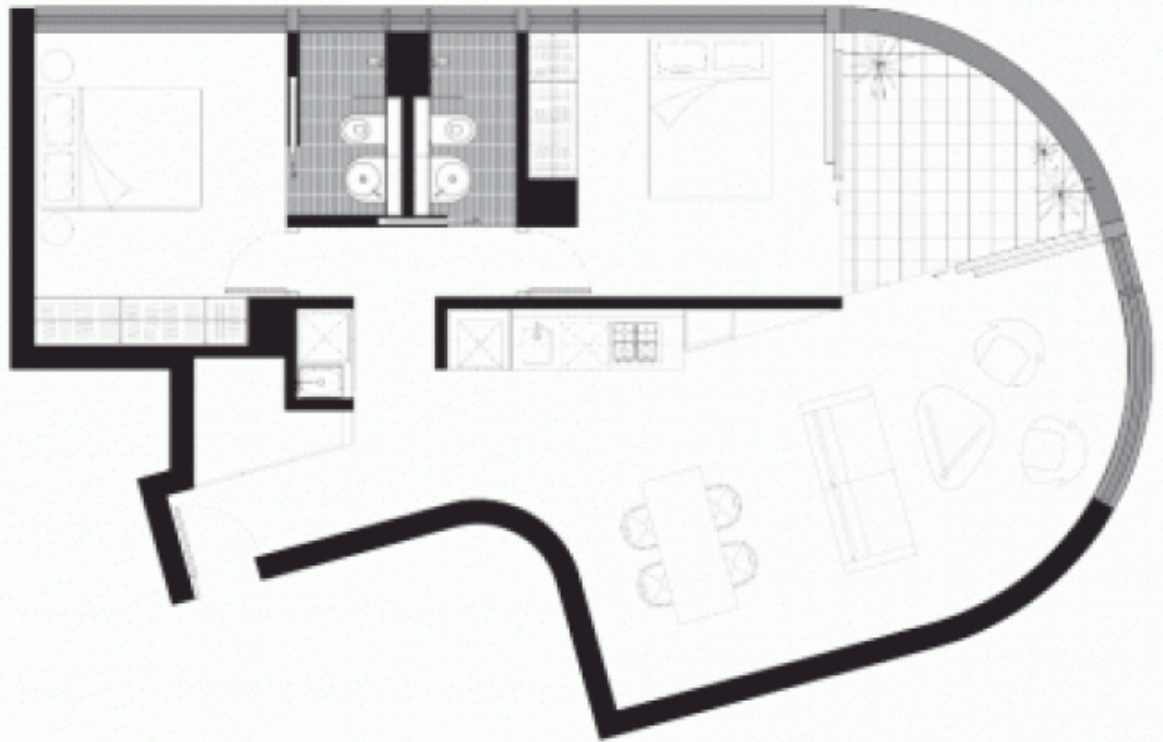
**Kristian Karaspyros**

 0436 477 102

 kristian.karaspyros@morton.com.au

[morton.com.au](http://morton.com.au)

# STELLA



#601  
2 BED - LEVEL 6 80 m<sup>2</sup>



73 sqm internal + 7 sqm balcony