



morton.

Kingswood D702/48-56 Derby Street

 1  1  1

Conveniently located in the near new Omega Apartment development (entry via Foyer D), this unfurnished stylish and spacious top floor near new one bedroom apartment has quality designer finishes, plus ducted air con throughout, is ideal for the busy professional, close to all the amenities required, including being across the road from Nepean Hospital and a 12 minute walk to Kingswood train station.

- Light-filled north-east facing position nestled on the top floor level 7 with balcony including gas and water tap outlet.
- Open living and dining with skylight makes this apartment light and bright all day. Floorboards to be installed (photos to be taken once installed), designer drop-shadow cornices, reverse-cycle ducted air conditioning, additional storage cupboard, TV and gas outlet.
- Entertainer's eat-in gas kitchen with ample storage and bench space in a stylish dark colour scheme, including a double door pantry, Caesarstone island benchtop, Westinghouse dishwasher, cooktop and oven.
- Bedroom with reverse-cycle ducted air conditioning, triple

View

As advertised or by appointment

Agent

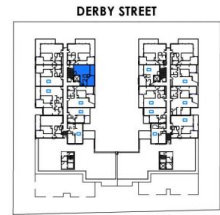
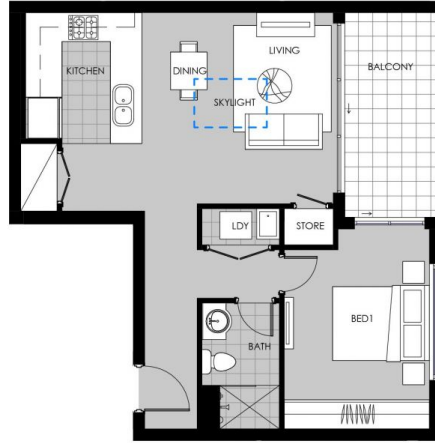
Amy Torbarina

 0438 977 172

 amy@morton.com.au

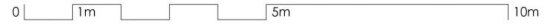
morton.com.au

Unit D702

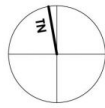


Internal = 52m²
Balcony = 8m²
Carspace = 1
Storage
-In Unit = 4m³
-in Basement = 2m³

Level 7- Unit D702



48-56 Derby Street
KINGSWOOD



Skyton Developments do not guarantee, warrant or represent that the information contained in this advertising and marketing document is correct. Any interested parties should make their own enquires as to the accuracy of the information. We exclude all interest or implied terms, conditions and warranties arising from this document and any liability for loss or damage arising there from.

1:100 @ A4