



morton.

Wentworth Point B15025/11 Bennelong Parkway

🛏 2 🚿 1 🚗 1

With respect to the latest government's COVID-19 restrictions we will be conducting open homes and private appointments with mandatory face masks, sanitisation, QR code check ins, and 1 person per 4sqm. Please submit an enquiry or contact the agent to be kept up to date with inspection times and register your attendance for viewings.

Located in one of the finest and newest developments in Wentworth Point, One The Waterfront, this penthouse level two bedroom apartment offers a unique luxury lifestyle with high end facilities to entertain year round while maintaining the ambiance of that relaxed lifestyle you've always wanted. Within easy access to transport services to Rhodes, Burwood, Parramatta and Sydney CBD, you'll be a stone's throw from local eateries, shops, and amenities with The Piazza, The Promenade, Marina Square and Pierside just moments away.

- East-facing all seasons living room with water glimpses and area views
- Generous open plan design with latest in décor finishes

morton.com.au

View

As advertised or by appointment

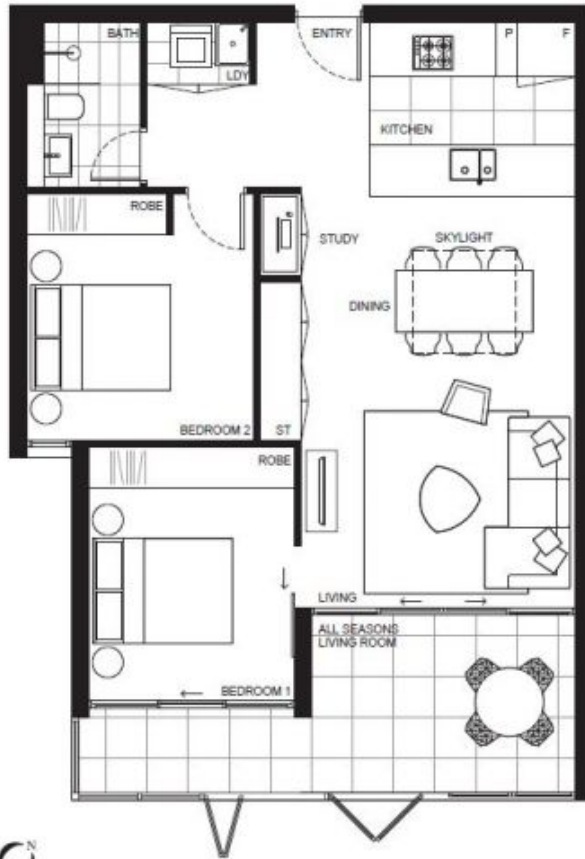
Agent

Nevena Petrovic

📞 0428 835 910

✉ nevena@morton.com.au

**BUILDING
ONE B**



Disclaimer: This plan is a guide only and does not constitute an offer or contract. Please note changes may be made during the development and area, fittings, fixtures and specifications are subject to change without notice in accordance with the terms of the contract of sale. All parties must rely on their own investigation to validate this information as it is not guaranteed. No liability will be accepted for any necessary measurement. **[Data based 01/26/15]**

ONE
THE WATERFRONT

APARTMENT | LOT
15025 | 98

2 Bed + 1 Bath + Study

INTERNAL 83m²
Incl. All Seasons Living Room
TOTAL 83m²



BUILDING ONE B LEVEL 15

ONE THE WATERFRONT DISPLAY CENTRE
Shop 4E, The Piazza, 21 Bennelong Parkway
Wentworth Point NSW 2127
1300 865 465 onethewaterfront.com.au

DEVELOPED BY **PIETY THP** SALES BY **LINK**