



morton.

Wentworth Point J10080/17 Amalfi Drive

 2  2  1

With respect to the latest government's COVID-19 restrictions we will be conducting open homes and private appointments with mandatory face masks, sanitisation, QR code check ins, and 1 person per 4sqm. Please submit an enquiry or contact the agent to be kept up to date with inspection times and register your attendance for viewings.

Located in one of the finest and newest developments in Wentworth Point, One The Waterfront, this two bedroom apartment offers a unique luxury lifestyle with high end facilities to entertain year round while maintaining the ambiance of that relaxed lifestyle you've always wanted. Within easy access to transport services to Rhodes, Parramatta and Circular Quay, you'll be stones throw away from local eateries, shops, and amenities with The Piazza, The Promenade, Marina Square and Pierside just moments away.

- Fully furnished apartment
- Open plan design with latest in décor and finishes

morton.com.au

View

As advertised or by appointment

Agent

Nevena Petrovic

 0428 835 910

 nevena@morton.com.au

BUILDING
ONE J



Disclaimer: This plan is a guide only and does not constitute an offer or contract. Please note changes may be made during the development and areas, fittings, fixtures and specifications are subject to change without notice in accordance with the terms of the contract of sale. All parties must rely on their own investigation to validate this information as it is not guaranteed. No liability will be accepted for any inaccuracy misstatement. **(Date Issued 04/04/16 E)**

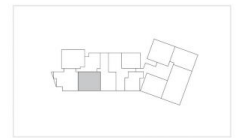
ONE

THE WATERFRONT

APARTMENT | LOT
10080 | 41

2 Bed + 2 Bath

INTERNAL 77m²
EXTERNAL 10m²
TOTAL 87m²



BUILDING ONE J LEVEL 10

1300 865 465 onethewaterfront.com.au

DEVELOPED BY **PIETYTHP** SALES BY **LINK**