



**morton.**

**Harris Park** 4/61-63 High Street

 2  1  1

With respect to the latest government's COVID-19 restrictions we will be conducting open homes and private appointments with mandatory face masks, sanitisation, QR code check ins, and 1 person per 4sqm. Please submit an enquiry or contact the agent to be kept up to date with inspection times and register your attendance for viewings.

**View**

As advertised or by appointment

**Agent**

**Nevena Petrovic**

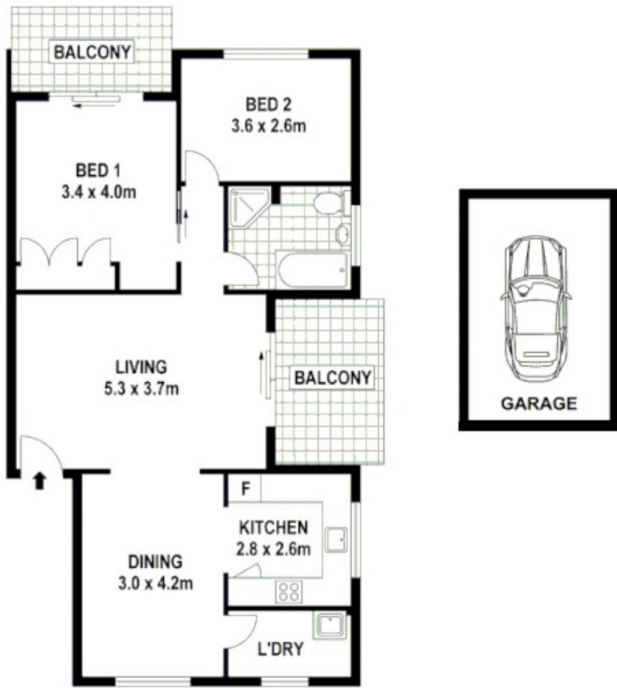
 0428 835 910

 nevena@morton.com.au

Perfectly positioned on the top floor of a full brick small security block, this well-proportioned two bedroom home is conveniently located within minutes' walk to Parramatta CBD, Westfield Shopping centre, Parramatta & Harris Park railway stations, bus interchange hub, parks, schools, vibrant Harris Park local shopping and dining.

- Family size separate living and dining space
- Two covered balconies with private and sunny aspects
- Separate recently renovated kitchen with modern appliances
- Built-in wardrobe
- Internal laundry with clothes dryer
- Single lock-up garage

**morton.com.au**



Disclaimer: Floor plans and site plans are intended as a guide only. They are not part of any legal document or title and are subject to errors, omission, and inaccuracies and should not be used as reference. Sizes and dimensions are approximate only. Interested parties should make their own enquiries.