



morton.

Westmead 25/17B Booth Street

 2  2  1

With respect to the latest government's COVID-19 restrictions we will be conducting open homes and private appointments with mandatory face masks, sanitisation, QR code check ins, and 1 person per 4sqm. Please submit an enquiry or contact the agent to be kept up to date with inspection times and register your attendance for viewings.

Great opportunity to lease in the new Asha development in Westmead. This development is perfectly positioned just minutes away from Parramatta CBD with easy access to transport, schools, Westfield shopping centre and Parramatta Park.

- Generous open plan design with fresh modern décor
- Beautiful designer kitchen
- Timber flooring throughout living area plus ample storage
- Both bathrooms have floor to ceiling tiles, mirrored vanity cabinet
- Spacious bedroom with built-in robe, abundance of natural light

morton.com.au

View

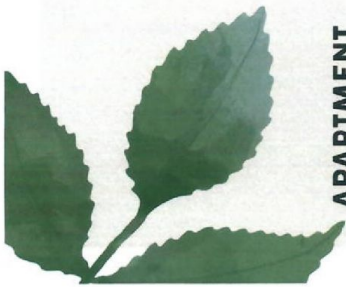
As advertised or by appointment

Agent

Nevena Petrovic

 0428 835 910

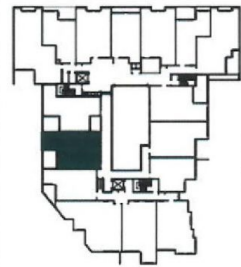
 nevena@morton.com.au



APARTMENT

25

BEDROOMS	02
BATHROOMS	02
INTERNAL	77m²
EXTERNAL	10m²
TOTAL AREA	87m²



LEVEL 02

Disclaimer: The provided information is set out as a general guide to reflect the developers current intentions. All information is believed to be correct at the time of campaign development and is subject to CC. All incoming purchasers should seek their own legal advice. Furniture items are not included.