



**morton.**

**Wentworth Point** H15121/19 Amalfi Drive

 2  2  1

With respect to the latest government's COVID-19 restrictions we will be conducting open homes and private appointments with mandatory face masks, sanitisation, QR code check ins, and 1 person per 4sqm. Please submit an enquiry or contact the agent to be kept up to date with inspection times and register your attendance for viewings.

Great opportunity to lease one of the finest apartments at One The Waterfront, an iconic development in Wentworth Point. One The Waterfront is located at the foot of Wentworth Point, it is in easy access to transport services to Rhodes, Parramatta and Circular Quay.

- Timber flooring
- High floor apartment with excellent source of natural light
- Generous open plan design with latest in décor finishes
- Quality designer kitchen with Bosch built-in appliances
- Bathroom has floor to ceiling tiles, mirrored vanity cabinet
- Spacious bedrooms with built-in robe, main with en-suite
- Internal laundry with dryer, air-conditioning, fast speed fiber

**morton.com.au**

**View**

As advertised or by appointment

**Agent**

**Nevena Petrovic**

 0428 835 910

 nevena@morton.com.au

BUILDING  
ONE H



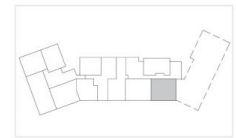
Disclaimer: This floorplan, including treatment to balcony or courtyard, is indicative only and subject to change without notice. Any dimensions and areas shown may be varied subject to detailed design and authority requirements. Areas are measured from internal face of walls and from centreline of windows.

ONE  
THE WATERFRONT

APARTMENT | LOT  
**15121** | **98**

2 Bed

INTERNAL 77m<sup>2</sup>  
EXTERNAL 10m<sup>2</sup>  
**TOTAL 87m<sup>2</sup>**



BUILDING ONE H LEVEL 15

1300 865 465

[onethewaterfront.com.au](http://onethewaterfront.com.au)

PIETYTHP