



# morton.

**Bondi** 5111/34 Wellington Street

 2  2  1

With its sun drenched north easterly aspect and sensational entertainers' courtyard with its own access, this contemporary apartment offers the perfect balance of space, style and convenience. Enhanced with three metre high ceilings, the glass wrapped interiors are immaculately presented with stylish modern finishes throughout. An entertainers delight providing over 200sqm of indoor/outdoor living and level access from a secure car space, the home is set in Mirvac's award winning complex 'The Moreton', a short walk from local shops, great cafes and the beach.

- 2 spacious bedrooms with built-in wardrobes
- Master bedroom with ensuite featuring a freestanding bathtub
- Open plan living/dining flowing onto the entertainer's courtyard
- Private courtyard has direct access to the common garden
- Deluxe Miele kitchen with stone benchtop offers gas cooking
- Ducted reverse cycle air-conditioning throughout
- Internal laundry with Fisher & Paykel Dryer

[morton.com.au](https://www.morton.com.au)

### View

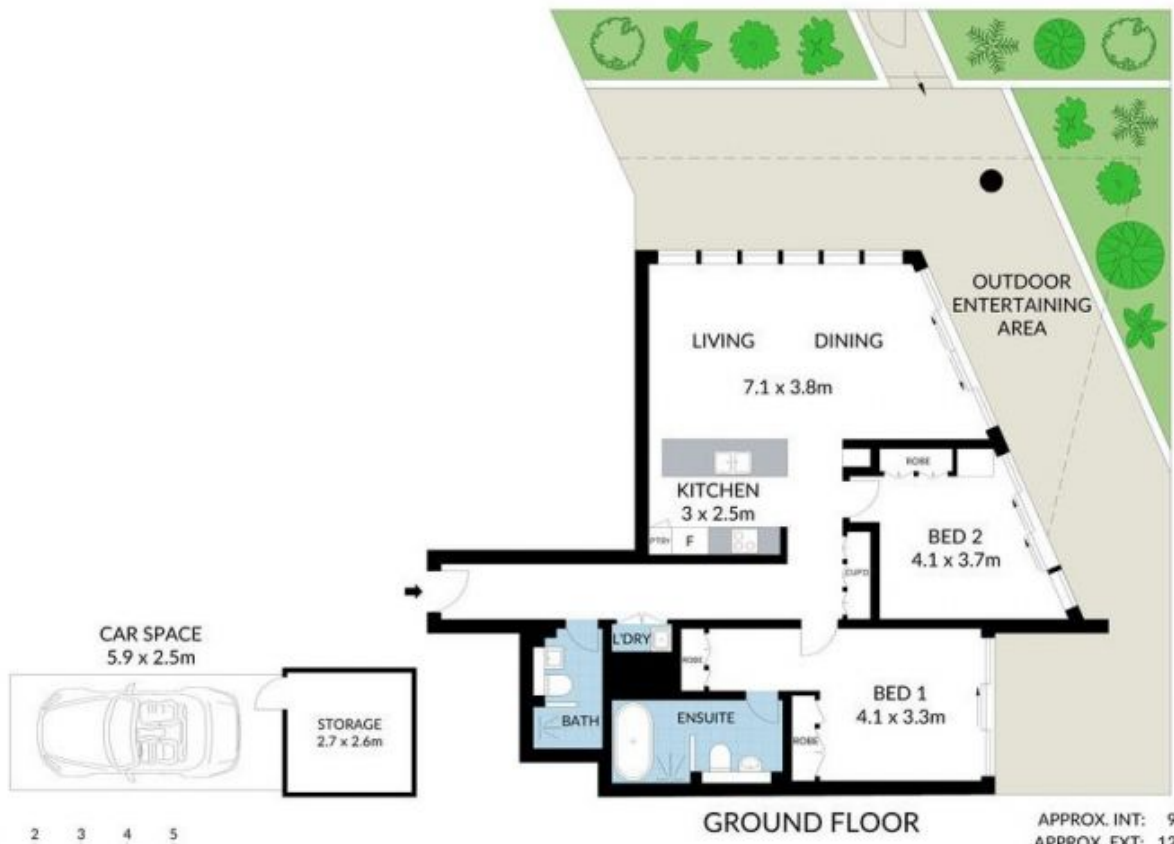
As advertised or by appointment

### Agent

**Kristian Karaspyros**

 0436 477 102

 [kristian.karaspyros@morton.com.au](mailto:kristian.karaspyros@morton.com.au)



**GROUND FLOOR**

APPROX. INT: 95m<sup>2</sup>  
 APPROX. EXT: 129m<sup>2</sup>



0 1 2 3 4 5

Scale in metres. Indicative only. Dimensions are approximate. All information contained herein is gathered from sources we believe to be reliable. However we cannot guarantee its accuracy and interested persons should rely on their own enquiries.