



morton.

Macquarie Park 1201/19 Halifax Street

🛏 2 🚿 2 🚗 1

With respect to the latest government's COVID-19 restrictions we will be conducting open homes and private appointments with mandatory face masks, sanitisation, QR code check ins, and 1 person per 4sqm. Please submit an enquiry or contact the agent to be kept up to date with inspection times and register your attendance for viewings.

Great opportunity to lease this modern two-bedroom apartment located on level 12 at NBH at Lachlan's Line. This iconic development perfectly positioned above a bustling town square at the heart of the new Lachlan's Line master plan.

- Generous open plan lounge with uninterrupted views
- Quality designer kitchen with Miele gas appliances
- Spacious bedrooms with built-in robe, abundance of natural light
- Sleek bathroom has floor to ceiling tiles, mirrored vanity cabinets
- One car space and storage cage, security access
- Video intercom, laundry with dryer, air-conditioning, NBN

View

As advertised or by appointment

Agent

Morton

📞 info@morton.com.au

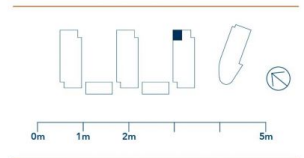
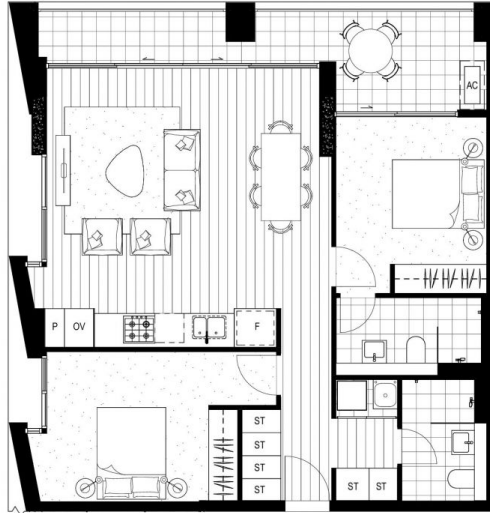
morton.com.au



2B.08	
Internal Area	77-81m ²
External Area	9-13m ²
Total Area	86-94m ²

HEARTH

5.01, 6.01, 7.01, 8.01, 8.01, 9.01, 10.01, 11.01, 12.01, 13.01, 15.01, 16.01



REV D_01.06.18

NBHSYDNEY.COM 1800 388 788

Refer to General Arrangement Plans for specific unit locations, orientation and context. Note that all graphics including balustrades, glazing units, door units and the like should be taken to be indicative only. Window locations and operable window and door units are shown as indicative only and are subject to change. Ducts and air conditioning units and their locations are shown as minimal and are subject to change. Floor plans are at an unspecified scale. All internal and external unit areas and sizes are indicated as approximate only and are subject to final strata survey. *Varies - possible window position for each individually listed unit only. Refer to the General Arrangement Plans for exact window and door positions for each individual unit. Please note that this floor plan was produced prior to construction. The information here is believed to be correct but is not guaranteed. Changes may be made during construction and dimensions, areas, fittings and specification are subject to change without notice in accordance with the provisions of the contract for sale. The furniture and furnishings depicted are not included with the sale and purchase must refer to the contract for sale for a list of inclusions. The position of furniture and furnishings should not be taken to be indicative of final positions of power points, TV connection points and the like. Prospective purchasers must rely on their own enquiries. Balustrades for services are not depicted.