



# morton.

**Sydney** 45 Shelley Street



With respect to the latest government's COVID-19 restrictions we will be conducting open homes and private appointments with mandatory face masks, sanitisation, QR code check ins, and 1 person per 4sqm. Please submit an enquiry or contact the agent to be kept up to date with inspection times and register your attendance for viewings.

This is a fantastic opportunity to secure an executive style, tastefully furnished one bedroom apartment located at the prestigious King Street Wharf development. Enjoy the cosmopolitan lifestyle and all that the city has to offer.

- Renovated and fully tiled in living and bedroom
- Combined lounge/dining area leads to balcony
- Bedroom with built in robes and balcony access
- Kitchen with gas cooktop and dishwasher
- Balcony overlooking the city
- Separate study area for a home office
- Large designer bathroom with internal laundry
- Reverse cycle air conditioning

[morton.com.au](https://morton.com.au)

### View

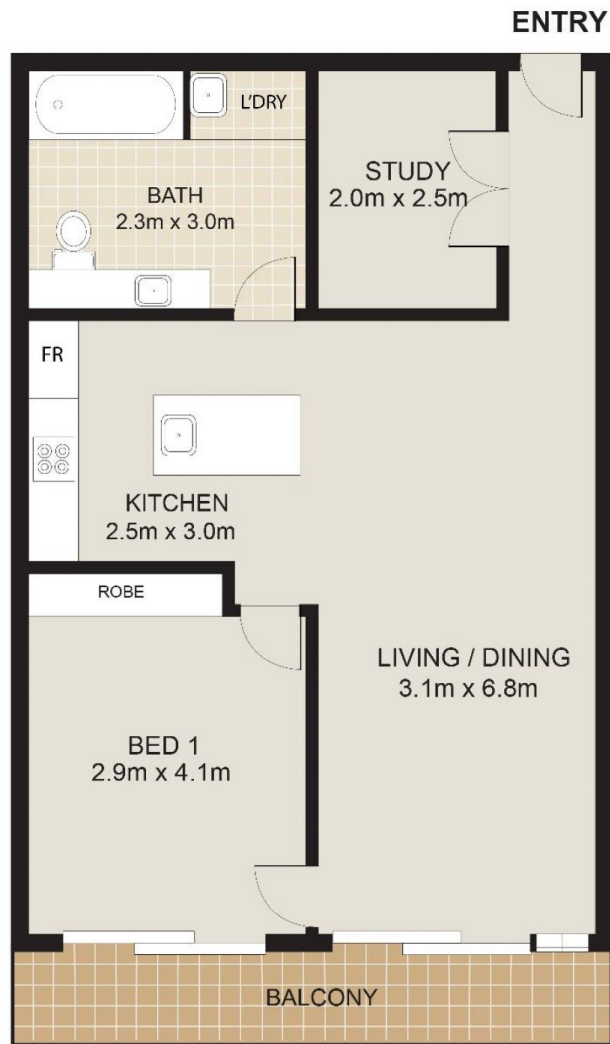
As advertised or by appointment

### Agent

**Morton RE**



rentals@morton.com.au



**ADDRESS : 314 / 45 - 49 SHELLEY STREET , SYDNEY NSW**



DISCLAIMER : THE FOLLOWING FLOOR PLAN DIAGRAM USED FOR DEMONSTRATION PURPOSES ONLY. THIS DIAGRAM IS NOT PART OF ANY LEGAL DOCUMENT. ALL FIGURES / MEASUREMENTS ARE APPROXIMATE ONLY.