



morton.

Wentworth Point H8136/19 Amalfi Drive

2 2 1

In one of Wentworth Point's most prized developments, this quality modern apartment radiates star power with a contemporary design paired with an easy-maintenance style. It offers a user-friendly single-level floorplan with a generous two-bedroom layout and a quiet location in the popular One The Waterfront community.

- Fresh, breezy and bright interiors with an open-plan design
- Easy level flow to a sheltered balcony and outdoor dining space
- Two bedrooms include a main with ensuite and balcony access
- Smartly appointed modern kitchen comes with gas cooking
- A well-lit designer bathroom, ensuite and internal laundry
- Air-conditioning, video intercom, lift, on-site building manager
- Security basement car space plus caged storage on title
- Exclusive access to a rooftop sky garden with BBQ areas

An idyllic lock-up-and-leave retreat on the edge of every convenience with Piazza cafes, the ferry wharf and shopping

morton.com.au

View

As advertised or by appointment

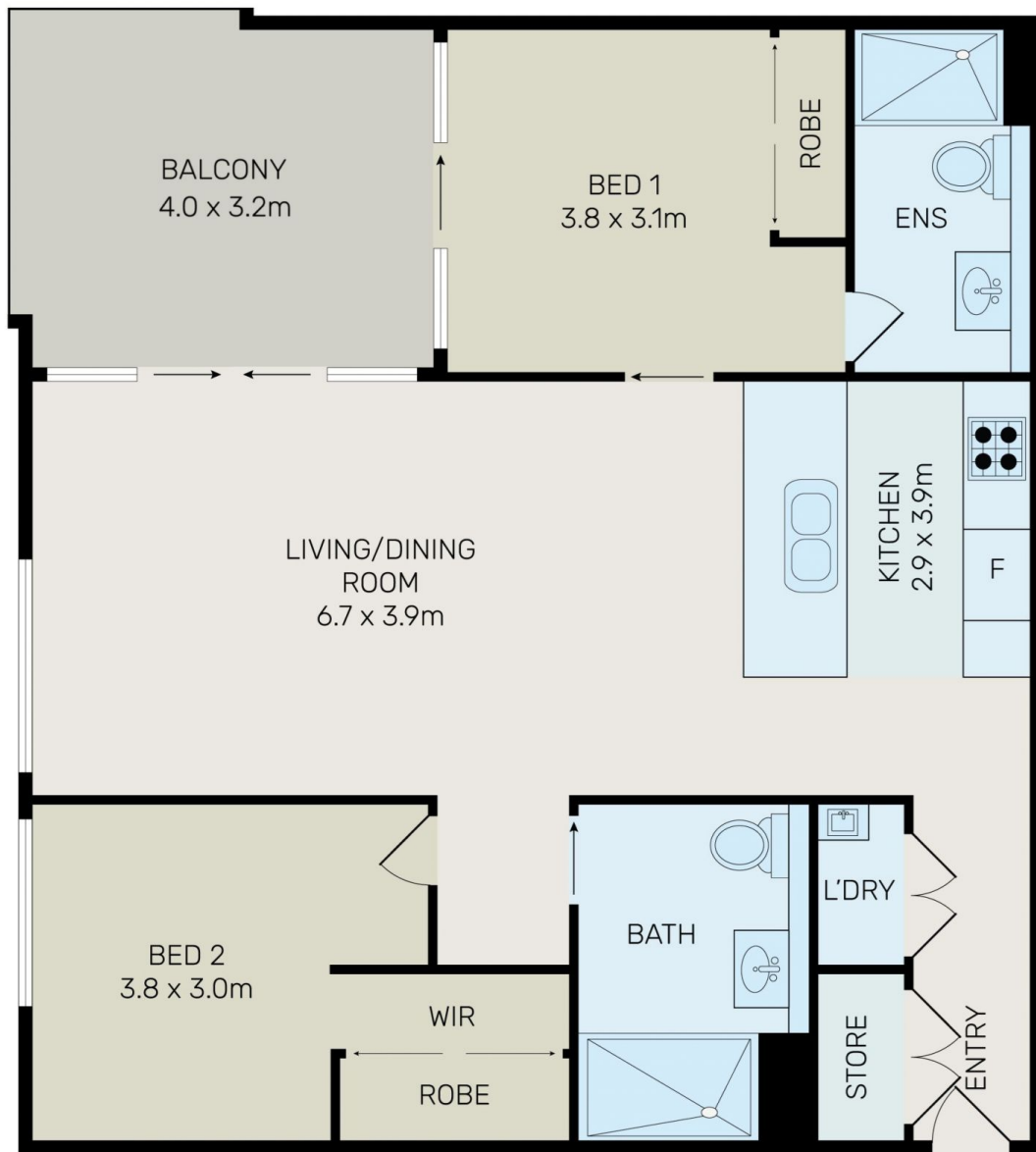
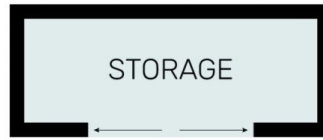
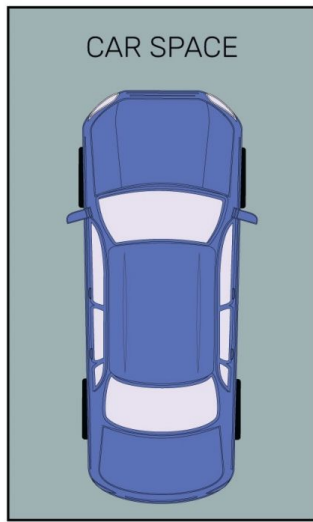
Agents

Vivian Zhang

0447 964 200
vivian@morton.com.au

Dylan Choe

0416 932 977
dylanchoe@morton.com.au



All information contained herein is gathered from all sources we believe to be reliable. However we cannot guarantee its accuracy and interested parties should rely on their own enquiries.



H8136/19 Amalfi Drive, Wentworth Point