



morton.

Wentworth Point 510/6 Nuvolari Place

 1  1  1

With respect to the latest government's COVID-19 restrictions we will be conducting open homes and private appointments with mandatory face masks, sanitisation, QR code check ins, and 1 person per 4sqm. Please submit an enquiry or contact the agent to be kept up to date with inspection times and register your attendance for viewings.

Here is your opportunity to move into this enviable fully renovated one bedroom apartment located in Palermo. This high quality, low maintenance apartment offers convenience of lifestyle and privacy in abode within a resort style complex which includes residents only gym and pool facilities. Positioned in the centre of Wentworth Point you'll be footsteps from the waterside, retail and shops, and local transport links. Just moments away from Marina Square and Pierside, as well as having the parklands on your doorstep, this apartment is sure not to be missed.

- Fully renovated throughout
- High quality dark timber flooring

morton.com.au

View

As advertised or by appointment

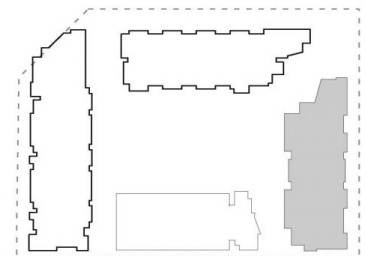
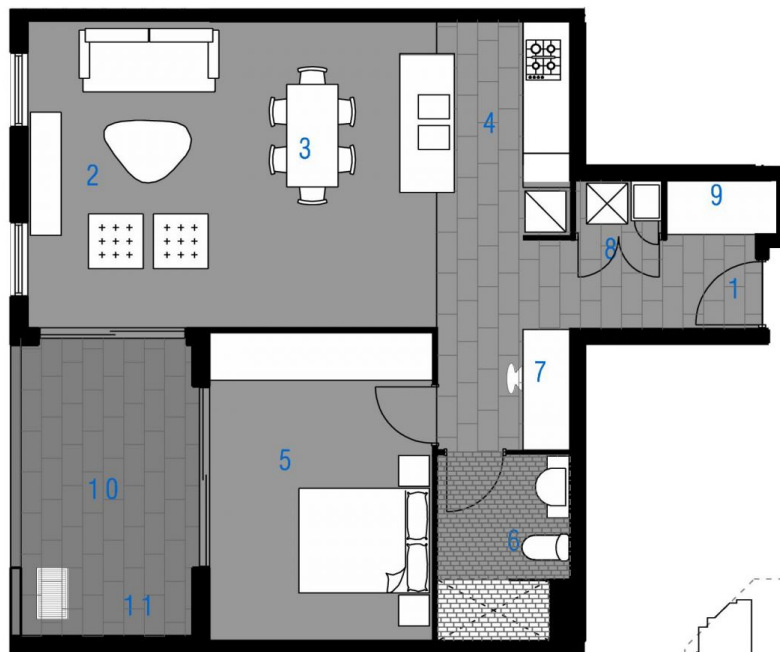
Agent

Morton



 info@morton.com.au

| | |
|----------------|----|
| ENTRY | 1 |
| LIVING | 2 |
| DINING | 3 |
| KITCHEN | 4 |
| BEDROOM | 5 |
| BATHROOM | 6 |
| MEDIA | 7 |
| LAUNDRY | 8 |
| LINEN | 9 |
| BALCONY | 10 |
| CLOTHES DRYING | 11 |



LEVEL 05

PALERMO

UNIT: **510**

TYPE: 1 Bedroom+Media

UNIT AREA: 65.6 sqm

OUTDOOR AREA: 10.7 sqm

SCALE: 1:100

PAYCE

Disclaimer: All layouts are indicative only, and subject to change.

