



morton.

Penrith 604/8 Aviators Way

 2  2  1

Thornton Central apartments are located on the north side of Penrith train station with uninterrupted park and district views, some with water views towards the picturesque Blue Mountains, situated in the master-planned community Thornton Estate, offering convenient apartment living only metres to Westfield shopping centre, local parks and quality restaurants and cafes.

- North east facing covered balcony on level 6
- Uninterrupted views to the Blue Mountains and over the cricket oval
- Split system reverse cycle air con throughout in living and bedrooms
- Entertainers eat-in kitchen with stone benchtops, soft close cupboards
- Four burner stove top with stainless steel appliances, dishwasher, mirrored splashback
- LED lighting, reverse-cycle air conditioning
- MATV and payTV points in living room and bedroom
- Open living and dining with engineered timber flooring


morton.com.au

View

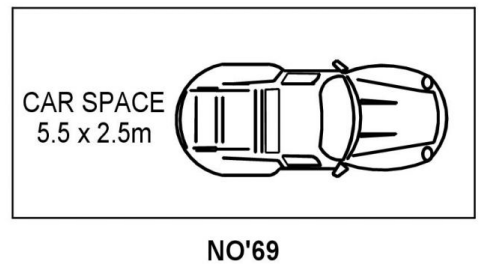
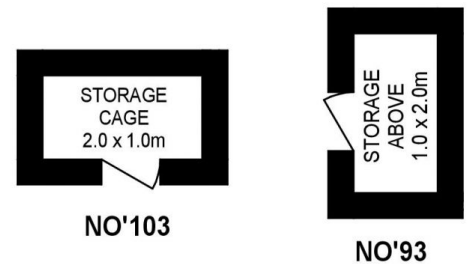
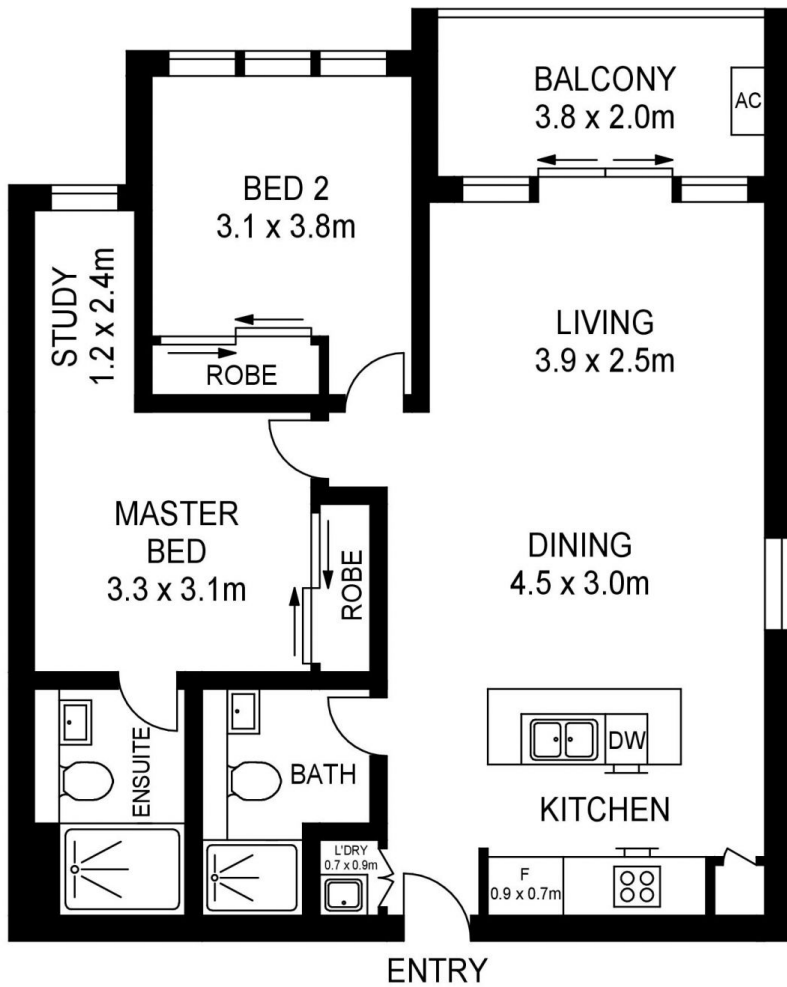
As advertised or by appointment

Agent

David Lipman

 0409 663 535

 david@morton.com.au



LEVEL SIX

APPROX. INT. AREA : 73.4m²

APPROX. EXT. AREA : 7.6m²

TOTAL AREA INCLUDING CAR AND STORAGE : 99m²

604/8 AVIATORS WAY, PENRITH



www.assetphotographers.com.au

Please note these measurements are approximate only. The plans is intended as a rough guide for illustrative purpose. It is not warranted or guaranteed to be correct nor it is part of the sale or rental contract

