



morton.

Wolli Creek B105/8 Gertrude Street

 2  2  1

With respect to the latest government's COVID-19 restrictions we will be conducting open homes and private appointments with mandatory face masks, sanitisation, QR code check ins, and 1 person per 4sqm. Please submit an enquiry or contact the agent to be kept up to date with inspection times and register your attendance for viewings.

Perfectly positioned on the parks edge, surrounded by waterways and lush green space, 'CAHILL GARDENS' is amidst all the natural splendor and captures panoramic views to the city and beyond. Residents will enjoy the best of Sydney's relaxed outdoor lifestyle, including the convenience of the village square with cafes and restaurants at their doorstep. Minutes walk to Wolli Creek train station and great park lands for recreational activities, this apartment is perfectly positioned for a great lifestyle.

Offering open-plan living space, thoughtfully designed kitchen and stylish bathrooms, the apartment is finished with top quality finishes including engineered Ceaserstone bench tops

morton.com.au

View

As advertised or by appointment

Agent

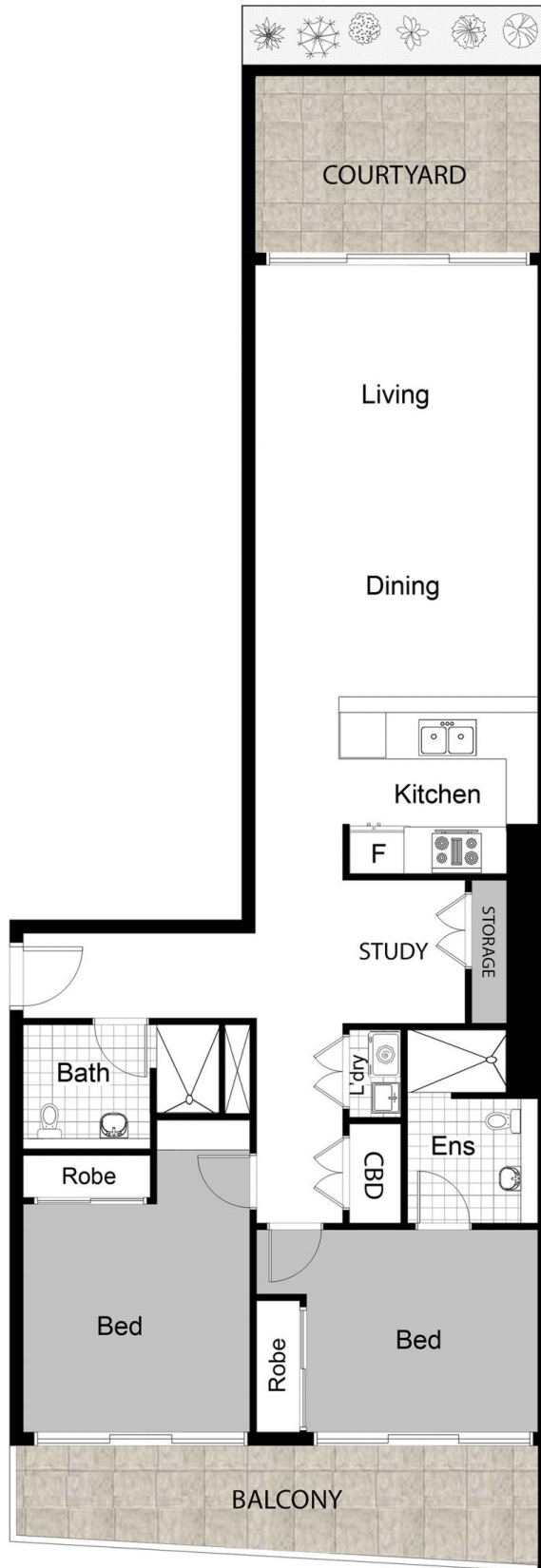
Kristian Karaspyros

 0436 477 102

 kristian.karaspyros@morton.com.au



INTERNAL AREA - 85sqm
EXTERNAL AREA - 30sqm
TOTAL AREA - 115sqm



DISCLAIMER: THIS IS FOR ILLUSTRATIVE PURPOSES ONLY.
ALL DIMENSIONS ARE APPROXIMATE AND IT DOES NOT
CONSTITUTE PART OF ANY LEGAL DOCUMENTS.

ADDRESS:

B105/6-8 GERTRUDE ST, WOLLI CREEK