

morton.

Mosman G01/116 Belmont Road



With respect to the latest government's COVID-19 restrictions we will be conducting open homes and private appointments with mandatory face masks, sanitisation, QR code check ins, and 1 person per 4sqm. Please submit an enquiry or contact the agent to be kept up to date with inspection times and register your attendance for viewings.

With respect to the government's restrictions around open homes and to help stop the spread of COVID-19, our properties can be viewed by appointment only. Please submit an online enquiry or contact the listing agent for more information.

Set to impress the luxury and lifestyle benefits of the spectacular Monarch building. This smartly appointed residence is ideally suited to those seeking a quality low maintenance home with high quality finishes and tranquil garden outlook. Peacefully set to the very rear of the complex, it is immaculately presented throughout and ideally positioned right in the heart of Mosman.

View

As advertised or by appointment

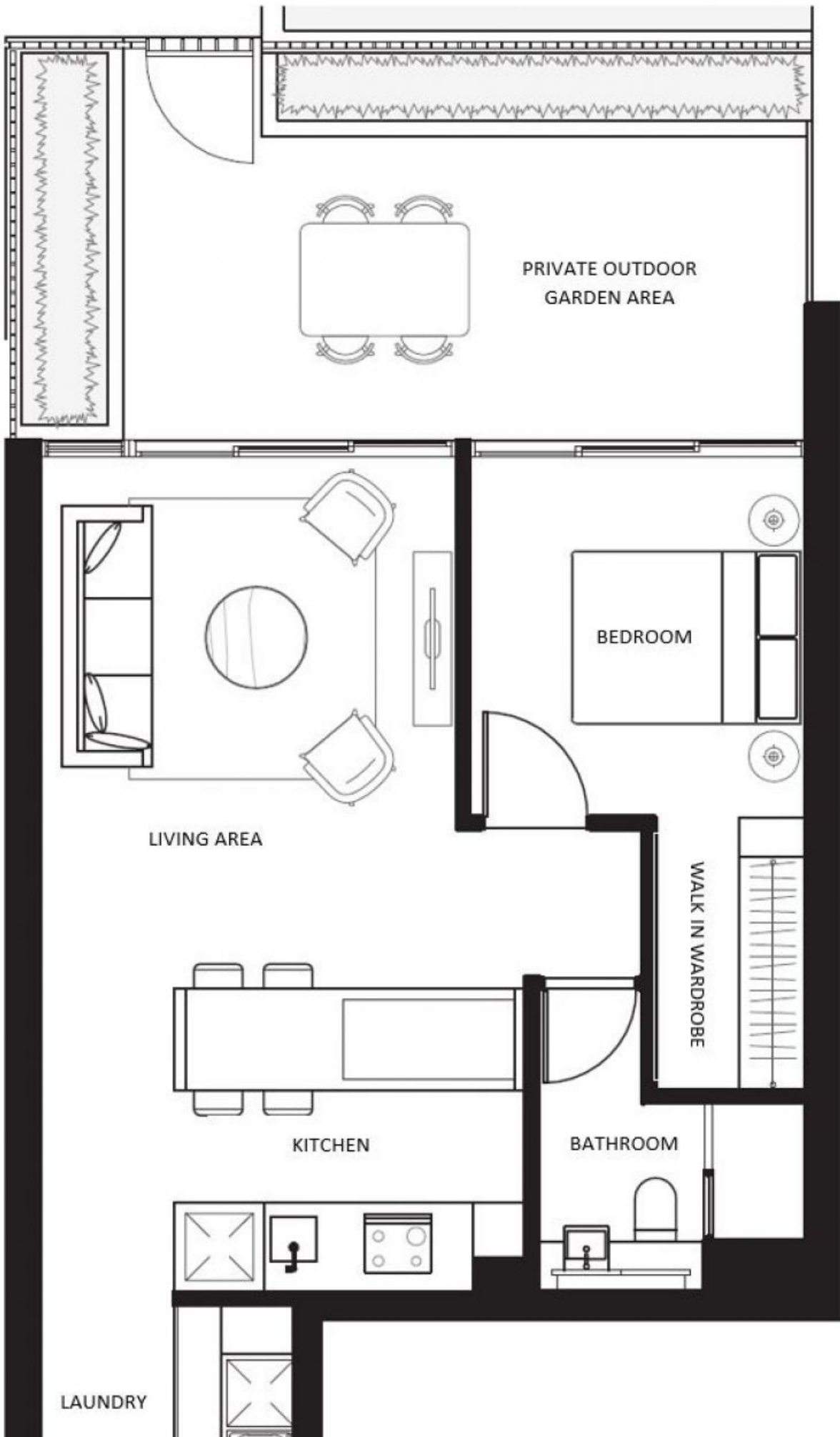
Agent

Sarah Fowell

📞 0437 492 129

✉️ sarah@morton.com.au

morton.com.au



PRIVATE OUTDOOR
GARDEN AREA

LIVING AREA

BEDROOM

WALK IN WARDROBE

KITCHEN

BATHROOM

LAUNDRY