





morton.

Bondi Junction 1005/253 Oxford Street

 1  1

With respect to the latest government's COVID-19 restrictions we will be conducting open homes and private appointments with mandatory face masks, sanitisation, QR code check ins, and 1 person per 4sqm. Please submit an enquiry or contact the agent to be kept up to date with inspection times and register your attendance for viewings.

Located in the hub of Bondi Junction, Capitol offers resort-style apartment living with a private rooftop entertainment area and easy access to a lively Westfield, bus/train interchange and Bondi Beach.

- Reverse cycle air conditioning
- Stainless steel appliances
- Soft close kitchen draws and cupboards
- Stone bench tops, mirror splash back
- LED under cupboard lighting
- Timber floors, efficient LED down lights
- Data/TV points in living and main bedroom
- Recessed mirrored cabinets in bathroom

morton.com.au

View

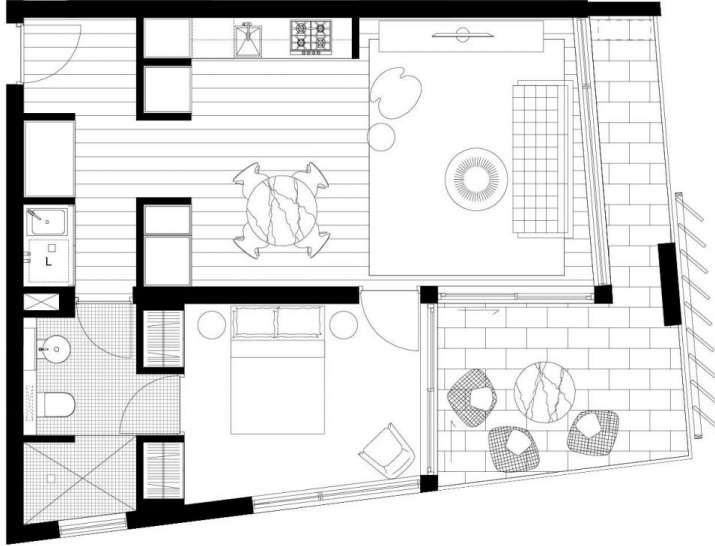
As advertised or by appointment

Agent


Morton




 info@morton.com.au



Disclaimer: This plan is guide only and does constitute an offer or contract. Please note charges may be made during the development and areas, fittings, fixtures and specifications are subject to change without notice in accordance with the terms of the contract of sale. All parties must rely on their own investigation to validate this information as it is not guaranteed. No liability will be accepted for any inaccuracy/misstatement.



CAPITOL
BONDI JUNCTION




LEVEL 5-14

APT 5.04, 6.05, 7.05, 8.05, 9.05, 10.05, 11.05
12.05, 13.05, 14.05

1 BED

Internal area	50sqm
External area	13sqm
Total	63sqm



www.capitolbondi.com.au
1800 66 33 95

