



# morton.

North Sydney 101/245 Pacific Highway

2 2 1

With respect to the latest government's COVID-19 restrictions we will be conducting open homes and private appointments with mandatory face masks, sanitisation, QR code check ins, and 1 person per 4sqm. Please submit an enquiry or contact the agent to be kept up to date with inspection times and register your attendance for viewings.

Set in a superb location convenient to both local/CBD transport and a cosmopolitan lifestyle where you are moments walk away from cafes, restaurants and minutes drive to the CBD is one of the newest additions to the North Sydney property market - Montrose North Sydney.

- Near new with quality fixtures and finishings
- Spacious open plan living and kitchen area
- Modern kitchen with island bench, gas cooking and dishwasher
- Superb floor plan, with natural light throughout
- Sizeable enclosed balcony, with glass louvres
- Master bedroom with built-ins and ensuite

[morton.com.au](http://morton.com.au)

### View

As advertised or by appointment

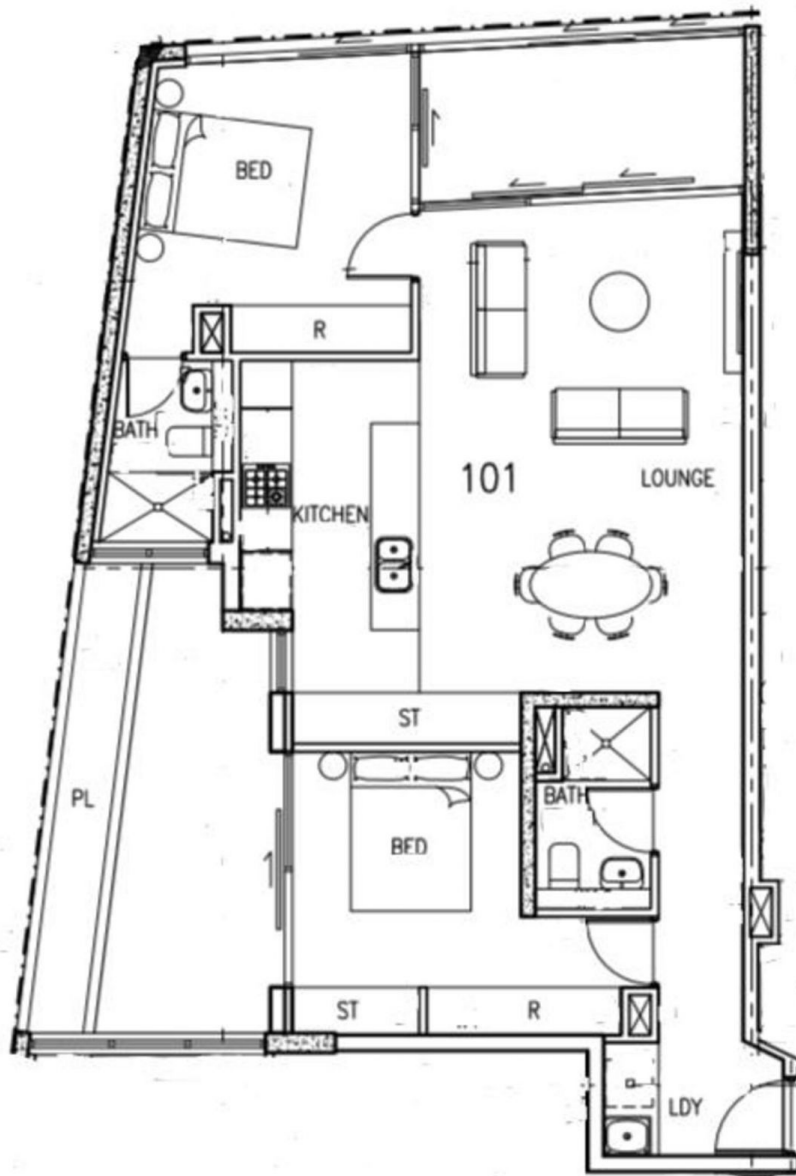
### Agent

**Sarah Fowell**

0437 492 129

sarah@morton.com.au

morton.



101/245 Pacific Highway, North Sydney