



morton.

Alexandria 9/18-20 Newton Street

 2  1  1

* Inspections will be scheduled for the property starting Tuesday 19th of October, 2021. Times will be updated online once confirmed. *

With respect to the latest government's COVID-19 restrictions we will be conducting open homes and private appointments with mandatory face masks, sanitisation, QR code check ins, and 1 person per 4sqm. Please submit an enquiry or contact the agent to be kept up to date with inspection times and register your attendance for viewings.

This stylishly updated sanctuary showcases a wonderfully spacious layout, with bright interiors flowing to two private courtyards and a sunlit balcony. Tucked away in a prized Alexandria pocket, merely meters from Erskineville Village and Bitton Café, it's surrounded by transport options, schools and beautiful local parklands.

- Open plan living with side windows enhancing natural light
- Modern stone gas kitchen with premium Bosch appliances

View

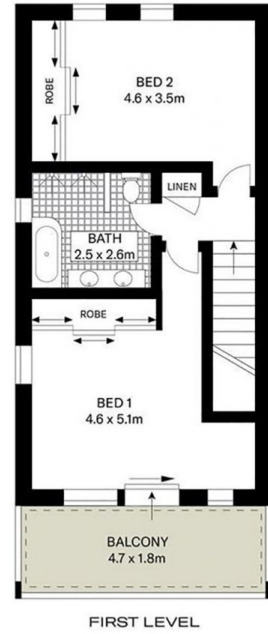
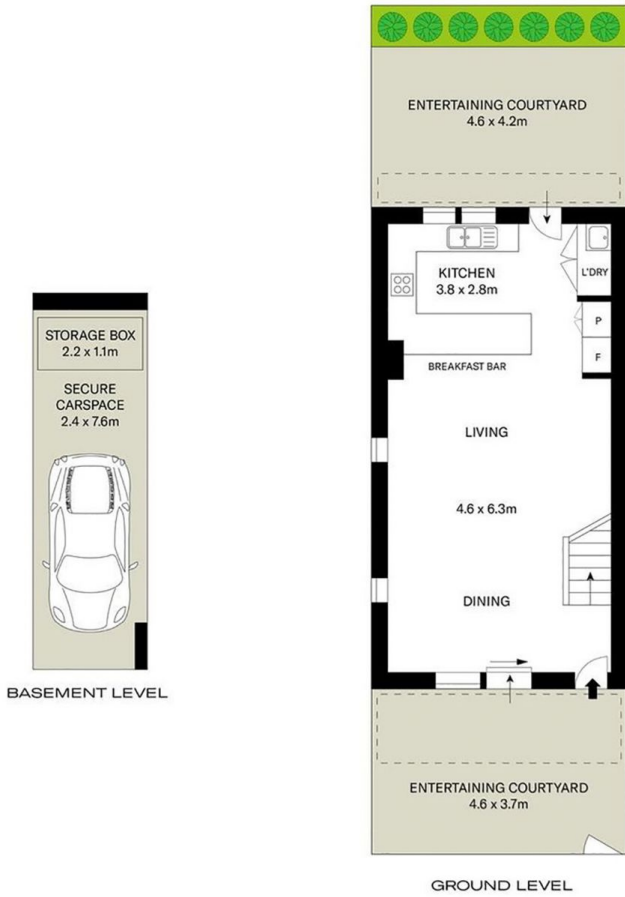
As advertised or by appointment

Agent

Morton

  info@morton.com.au

morton.com.au



THE INFORMATION CONTAINED IN THIS DOCUMENT HAS BEEN PROVIDED BY THIRD PARTIES. THE AGENCY HAS NOT CHECKED THE INFORMATION AND MERELY PASSES IT ON. NOT HAVING A BELIEF ONE WAY OR THE OTHER AS TO ITS ACCURACY. INTERESTED PARTIES SHOULD MAKE AND RELY UPON THEIR OWN ENQUIRIES.