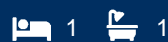




morton.

Woolloomooloo 331/6 Cowper Wharf Roadway



With respect to the latest government's COVID-19 restrictions we will be conducting open homes and private appointments with mandatory face masks, sanitisation, QR code check ins, and 1 person per 4sqm. Please submit an enquiry or contact the agent to be kept up to date with inspection times and register your attendance for viewings.

View

As advertised or by appointment

Agent

Sarah Fowell

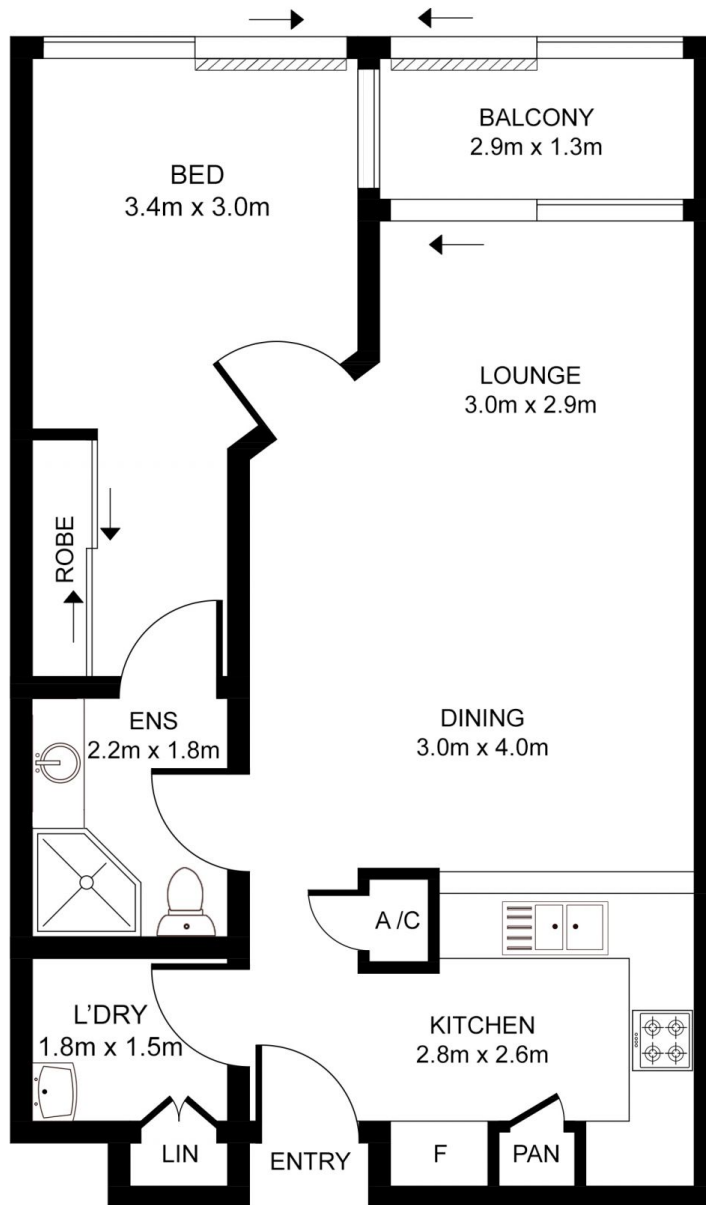


sarah@morton.com.au

Located at the northern end of the prestigious Finger Wharf this beautiful east facing one bedroom apartment is the perfect blend of peace and privacy.

- High ceilings with natural wharf beams
- Kitchen with granite bench tops, gas cooktop and dishwasher
- Cleverly designed bathroom, dual access
- Internal laundry with dryer
- Built-in wardrobes in bedroom
- Reverse cycle air conditioning
- 24 hour onsite security

morton.com.au



All information contained herein is gathered from all sources we believe to be reliable. However we cannot guarantee its accuracy and interested parties should rely on their own enquiries.

