



# morton.

**Sydney** 1510/28 Harbour Street



With respect to the latest government's COVID-19 restrictions we will be conducting open homes and private appointments with mandatory face masks, sanitisation, QR code check ins, and 1 person per 4sqm. Please submit an enquiry or contact the agent to be kept up to date with inspection times and register your attendance for viewings.

### View

As advertised or by appointment

### Agent

**Morton RE**

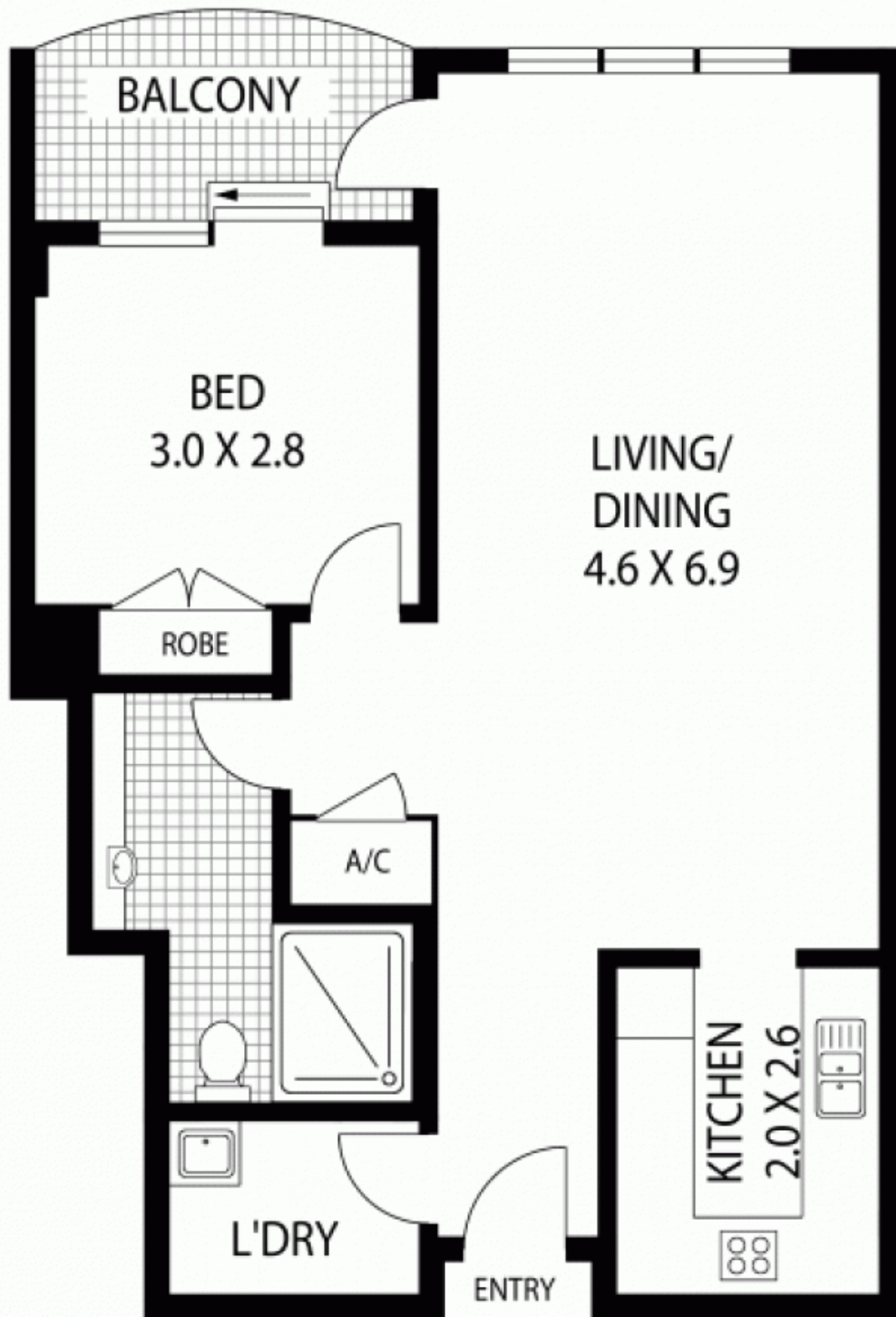


rentals@morton.com.au

This contemporary unfurnished apartment provides the ultimate in inner-city living. Well proportioned and immaculately presented this bright apartment, on level 15, is perfect for discerning executive wanting a central modern city base

- Unfurnished
- Updated timber flooring throughout
- Spacious gourmet gas kitchen with stone benches
- Generous bedroom with built in wardrobe
- East facing balcony, large stonotop bathroom
- Reverse cycle air conditioning, internal laundry

**morton.com.au**



**FIFTEENTH FLOOR**



**1510/28 HARBOUR STREET**

**SYDNEY**

**SCAPE Floor Planning Disclaimer:** This floor plan is conceptual only. It is provided for illustrative purposes only and should not be relied upon. We make no guarantee as to the correctness of this plan. All interested parties should make and rely on their own enquiries in determining the accuracy of the information contained in this floor plan.