

# morton.

Wentworth Point E8092/5 Bennelong Parkway

 2  1  1

With respect to the government's restrictions around open homes and to help stop the spread of COVID-19, our properties can be viewed by appointment only. Please submit an online enquiry or contact the listing agent for more information.

Great opportunity to lease one of the finest apartments in Building Evian at One The Waterfront, an iconic development in Wentworth Point. One the Waterfront offers a unique luxury lifestyle with high end indoor and outdoor facilities to entertain you all year round. Located at the foot of Wentworth Point, it is in easy access to transport services to Rhodes, Parramatta and Circular Quay.

- Generous open plan design with latest in décor finishes
- Quality designer kitchen with Bosch built-in appliances
- Bathroom has floor to ceiling tiles, mirrored vanity cabinet
- Spacious bedroom with built-in robe
- Internal laundry with dryer, air-conditioning, fast speed fiber internet

[morton.com.au](http://morton.com.au)

### View

As advertised or by appointment

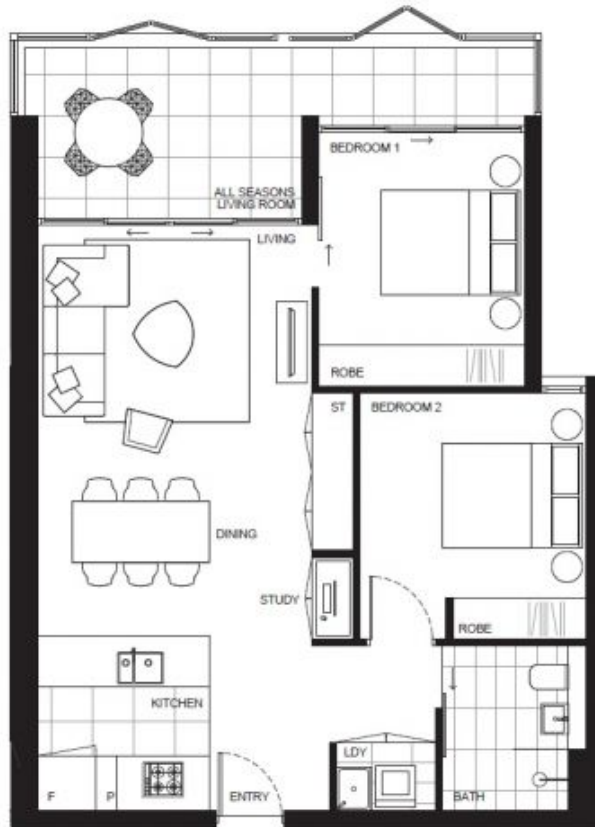
### Agent

**Nevena Petrovic**

 0428 835 910

 [nevena@morton.com.au](mailto:nevena@morton.com.au)

BUILDING  
ONE E



Disclaimer: This plan is a guide only and does not constitute an offer or contract. Please note changes may be made during the development and area, fittings, fixtures and specifications are subject to change without notice in accordance with the terms of the contract of sale. All parties must rely on their own investigation to validate this information as it is not guaranteed. No liability will be accepted for any inaccuracy or misstatement. (Date Issued 04/08/2014)

# ONE

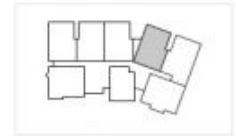
THE WATERFRONT

APARTMENT | LOT  
**8092** | **179**

2 Bed + 1 Bath + Study

INTERNAL 84m<sup>2</sup>  
*incl. All Seasons Living Room*

TOTAL 84m<sup>2</sup>



BUILDING ONE E LEVEL 8

ONE THE WATERFRONT DISPLAY CENTRE  
Shop 4E, The Plaza, 21 Bennelong Parkway  
Wentworth Point NSW 2127  
1300 865 465 [onethewaterfront.com.au](http://onethewaterfront.com.au)

DEVELOPED BY **PIETY THP** SALES BY **LINK**